

Technical Specification

Raritan PX
Model Number: PX3-5498A3-E2G1

240V
32A
7.7KVA




Line Drawing



Features

| | |
|-------------------------------------|--|
| Energy Metering | Voltage (V), Current (A), Active Power (kW), Real Power (kVA), Energy (kWh), Power Factor |
| Metering Accuracy | ISO/IEC 62053-21 1% |
| Metering per Input Line | Yes |
| Metering per Branch Circuit Breaker | Yes |
| Metering per Output Receptacle | Yes |
| Remote Outlet Switching | Yes |
| Environmental Sensor Ready | Yes |
| Networking | Gigabit_ethernet |
| Remote Management | HTTP(s); SSH; Telnet; RS-232 (Serial); Power IQ; SNMP version v2/v3; SMTP; JSON-RPC |
| Cascading | Yes up to (4) PDUs in a single cabinet can share a single Ethernet connection |
| Onboard Display | User-selectable display (voltage, current, or active power; per line, per breaker, or per receptacle) |
| Compatible Sensors | Temperature, Humidity, Air Flow, Static Pressure Single cable connection provides temp/humidity monitoring at three points in cabinet (with a single sensor assembly) |

Input

| | | |
|-----------------------|--|---|
| Input Plug | Clipsal 56P332 IP66 (240V, Single phase) |  |
| Cord Length | 3 meters (9.84 feet) standard | |
| Cord Entry | Bottom-front feed | |
| Cable Type | 2P 3W | |
| Number of Power Cords | 1 | |
| Maximum Input Current | 32A (per line) | |
| Nominal Input Voltage | 240V, Single phase | |
| Rated Input Voltage | 240 - 240V, Single phase | |
| Input Frequency | 50/60Hz | |
| Power Capacity | 7.7kVA at 240V, 7.7kVA at 240V | |

Output

| | |
|------------------------|---|
| Nominal Output Voltage | 240V |
| Rated Output Voltage | 240 - 240V |
| Output Connections | a. (18) Locking IEC 60320 C13 2-pole, 3-wire; 10A b. (6) Locking IEC 60320 C19 2-pole, 3-wire; 16A |
| Overload Protection | (2) 16A 1-pole Airpax LEGBX6-37483-16-V circuit breaker |
| Cable Retention | Universal locking |

Physical

| | |
|------------------------|--|
| Dimensions (W x D x H) | 2.1" x 2.8" x 60.6" ; 52mm x 71mm x 1539mm |
| Color | Black powder coat |
| Mounting | G2-RACK-FOR-ZU |

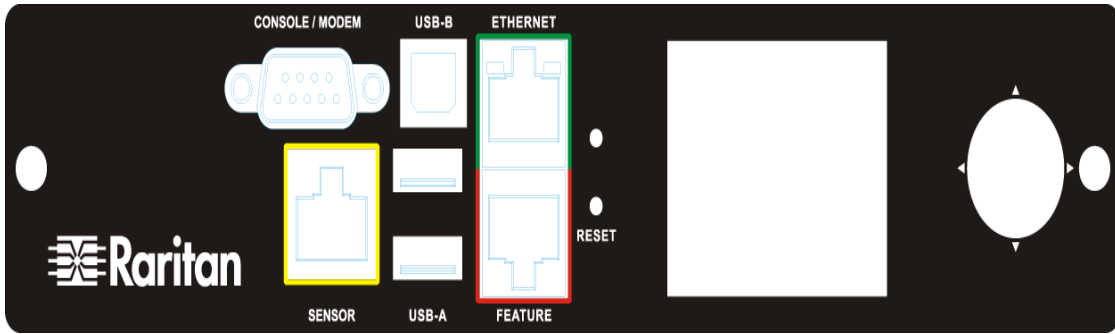
Environmental

| | |
|-----------------------------|-----------------------|
| Operating Environment | 5 - 60°C (41 - 140°F) |
| Operating Relative Humidity | 5-85% |
| Operating Elevation | 0-10000ft |

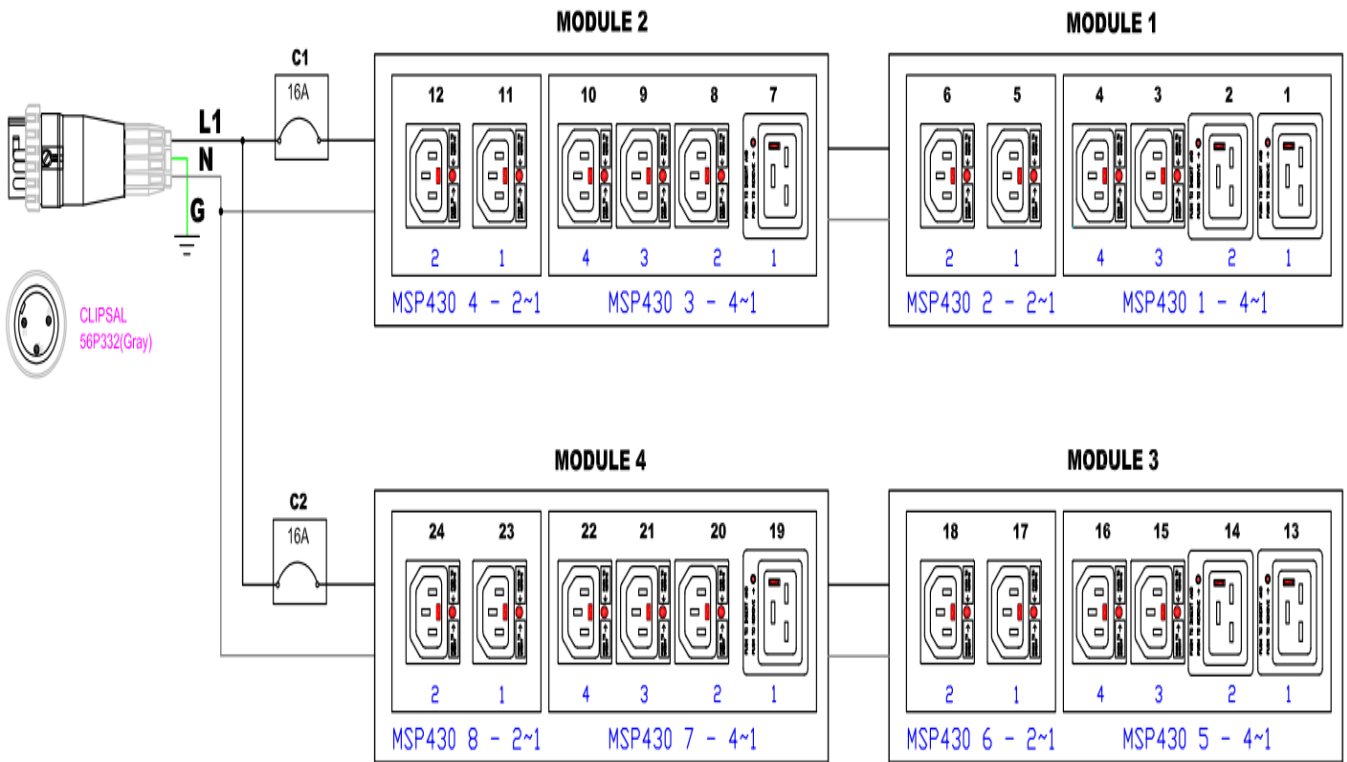
Conformance

| | |
|----------------------|--|
| Regulatory Approvals | CE Canada ICES-003, Class A Part 15 Class A of the FCC rules RoHS compliant |
|----------------------|--|

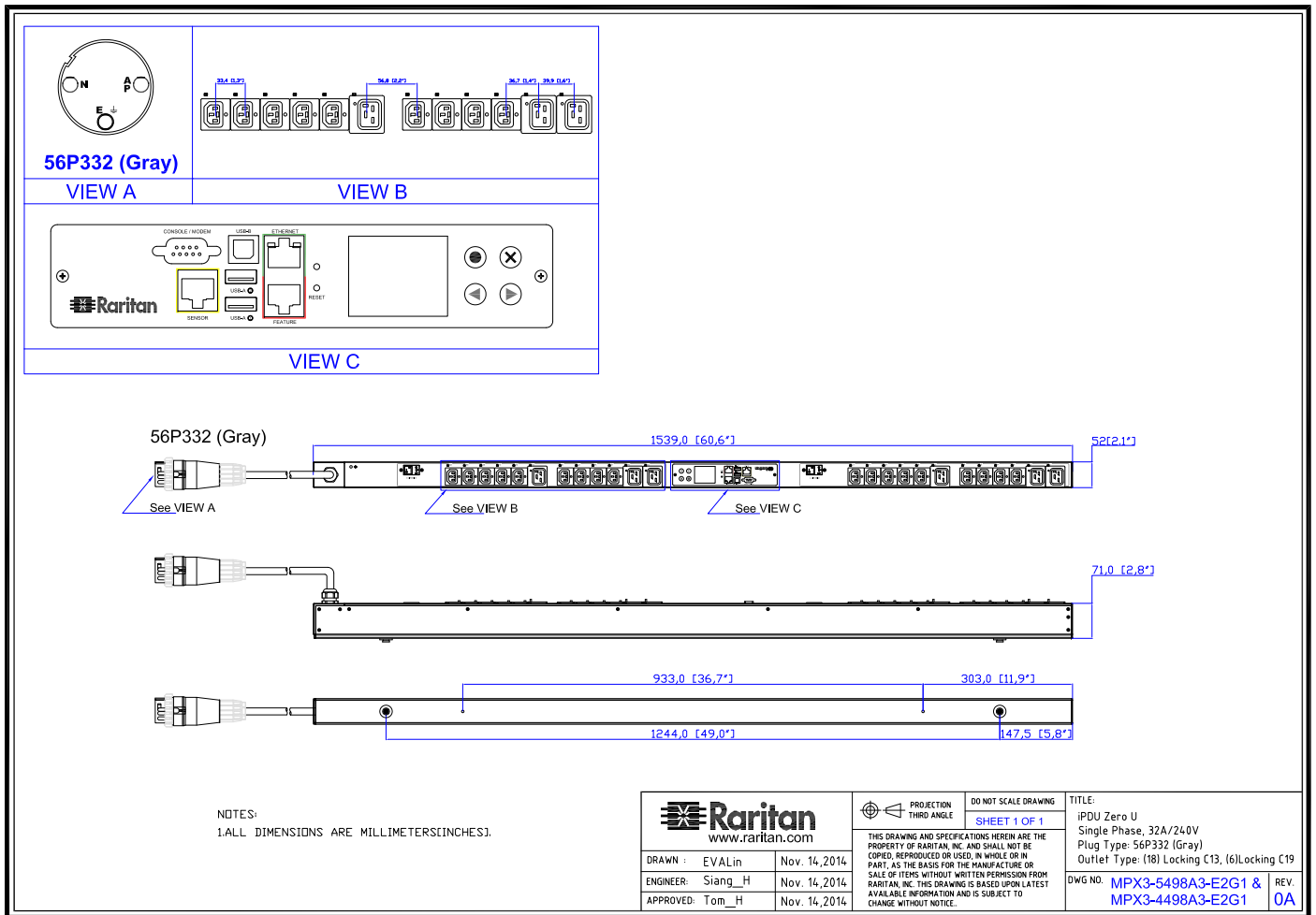
Control Panel Detail



Electrical Drawing Detail



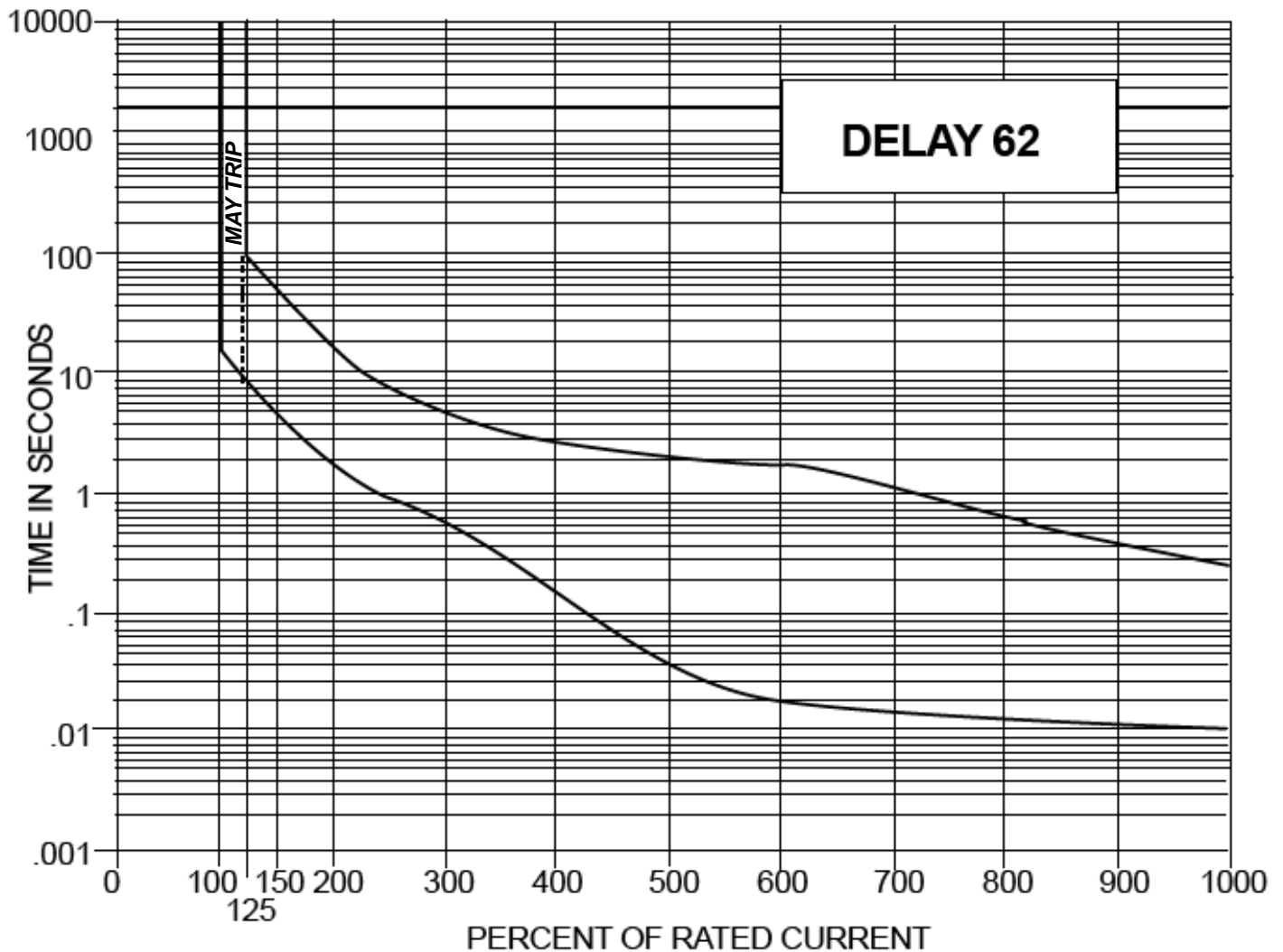
Mechanical Diagram



Compatible Sensors

| | |
|---------------|--|
| Environmental | DPX-T1 : single temperature node DPX-T2H2 : 2 nodes: each providing both temp + humidity DPX-T3H1 : 3 temperature nodes; one also with humidity DPX-TDP1 : temperature + differential air pressure DPX-AF1 : air flow sensor DPX-CC2-TR : Dual contact closure sensor |
|---------------|--|

Trip Curve of Circuit Breaker



©2015 Raritan Inc. All rights reserved. Raritan®, Know More. Manage Smarter.TM, Dominion® and PX® are registered trademarks or trademarks of Raritan Inc. or its wholly owned subsidiaries. All others are registered trademarks or trademarks of their respective owners. For more information, please visit www.raritan.com