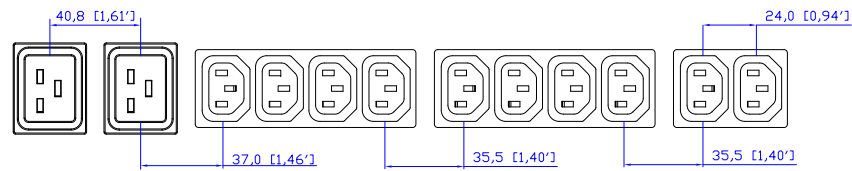
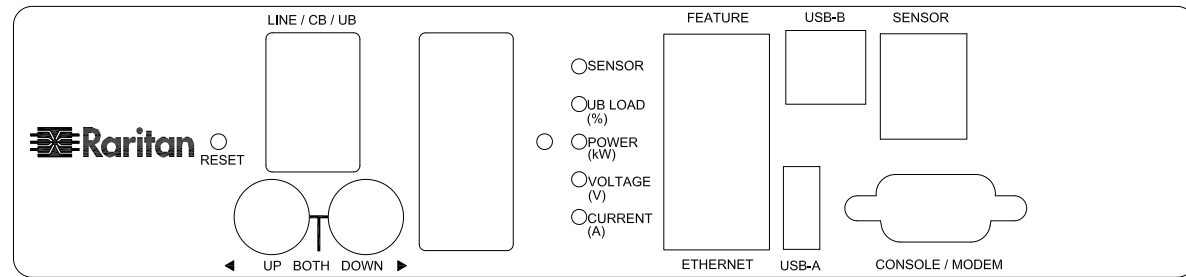


56PA332 32A/250V

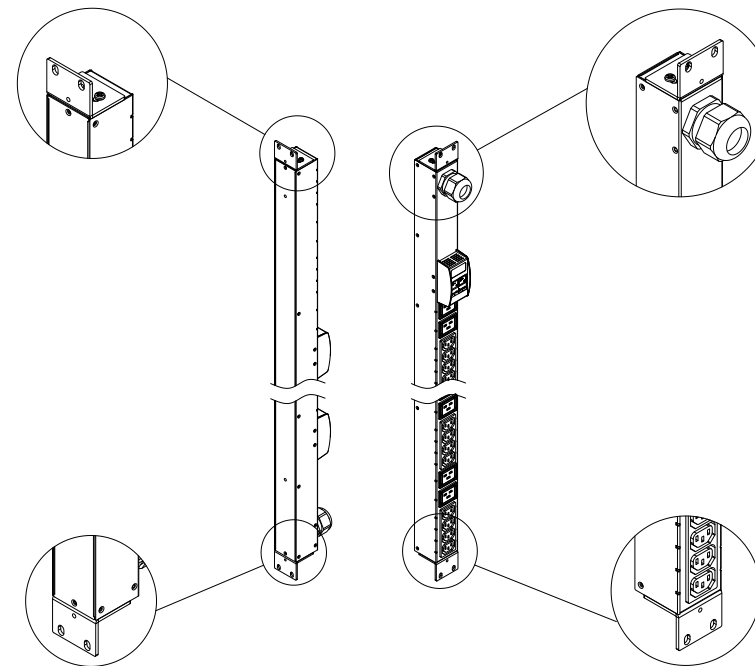
VIEW A



VIEW B

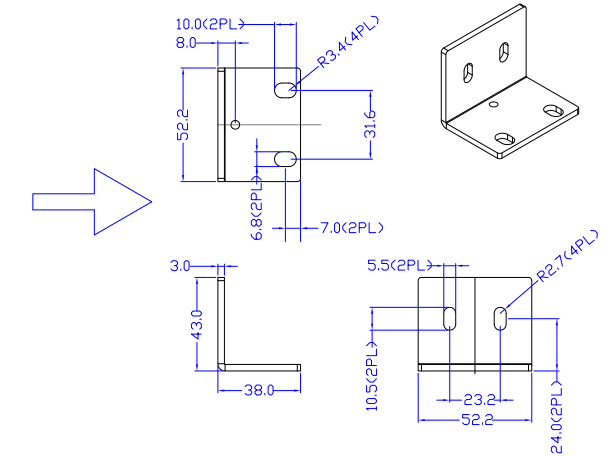


VIEW C



Option A

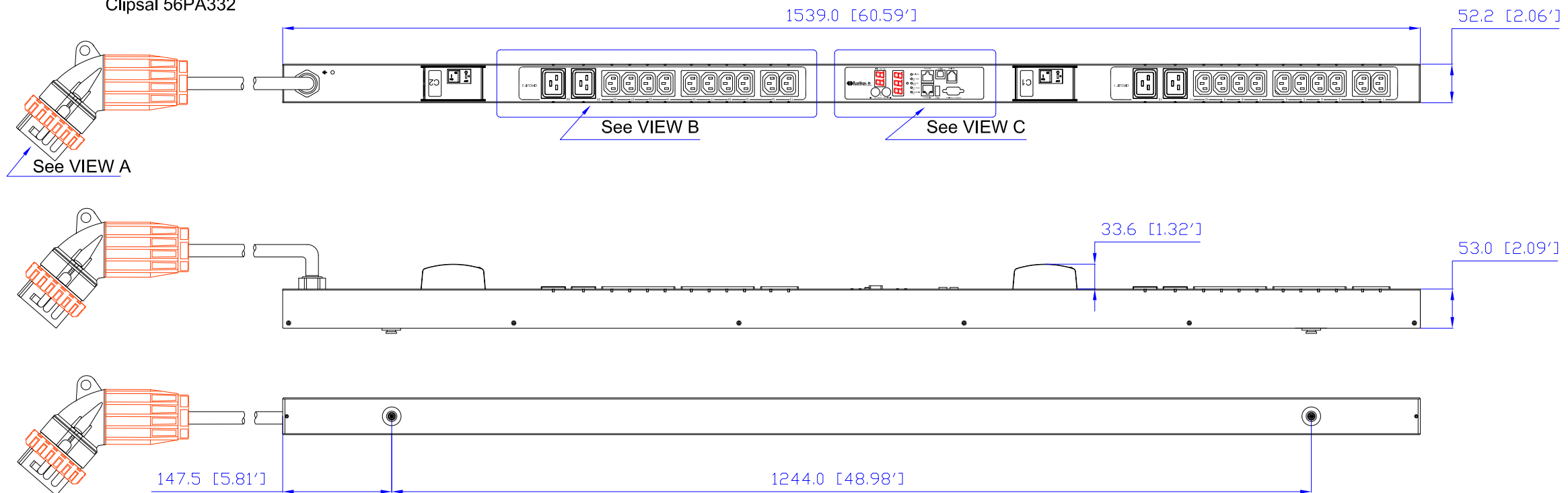
Option B



Rack mount L type detailed

Mounting options

Clipsal 56PA332



NOTES:
1.ALL DIMENSIONS ARE MILLIMETERS[INCHES].



PROJECTION
THIRD ANGLE

DO NOT SCALE DRAWING

SHEET 1 OF 1

TITLE:
iPDU Zero U,
Single phase 32A / 240V
Input : Clipsal 56PA332 32A/250V
Output : (20)IEC320 C13+(4)IEC320 C19

DRAWN : Eva LIN Aug. 11,2010
ENGINEER: Kevin_L Aug. 11,2010
APPROVED: Kevin_C Aug. 11,2010

THIS DRAWING AND SPECIFICATIONS HEREIN ARE THE PROPERTY OF RARITAN, INC. AND SHALL NOT BE COPIED, REPRODUCED OR USED, IN WHOLE OR IN PART, AS THE BASIS FOR THE MANUFACTURE OR SALE OF ITEMS WITHOUT WRITTEN PERMISSION FROM RARITAN, INC. THIS DRAWING IS BASED UPON LATEST AVAILABLE INFORMATION AND IS SUBJECT TO CHANGE WITHOUT NOTICE.

DWG NO. **MPX2-1493A2** REV. **A**