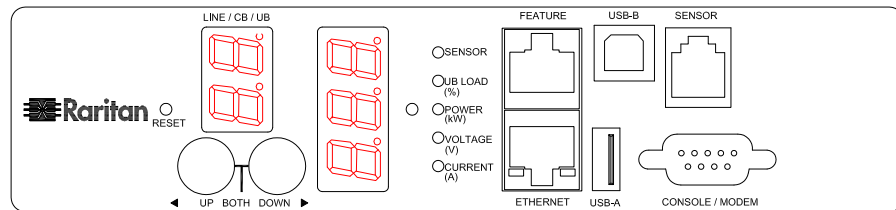
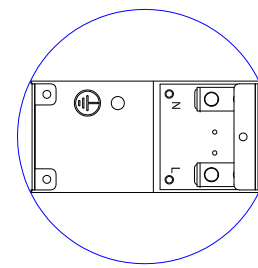


VIEW A

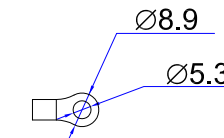


VIEW B

MPX2-1495YV-E2

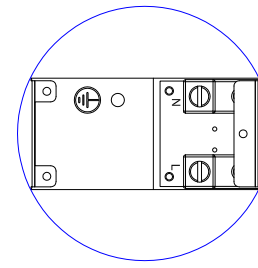


Ø3.4



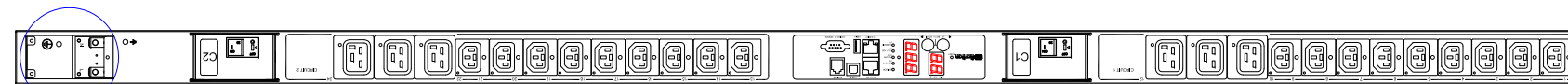
1. KST RNBS 5-5 or equivalent terminals for 10 AWG Wire
2. Inside diameter 5.3 mm & Outside diameter 8.9 mm terminal ring for M5 screw

MPX2-1495YV-E2D3

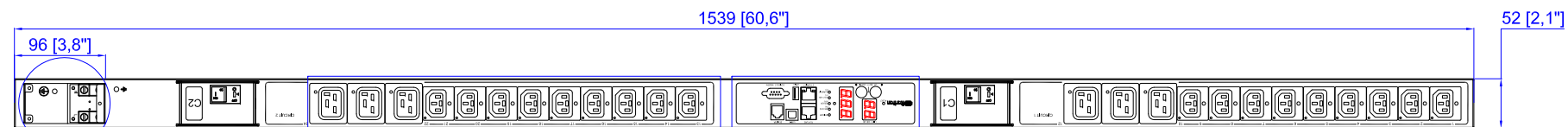


Scerw the wires into N / L terminal lugs

VIEW C



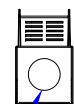
See VIEW C



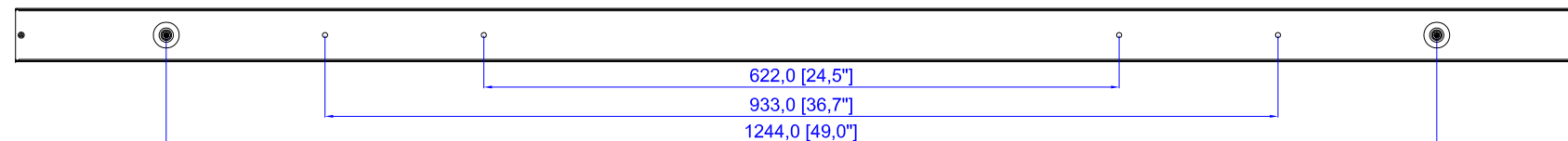
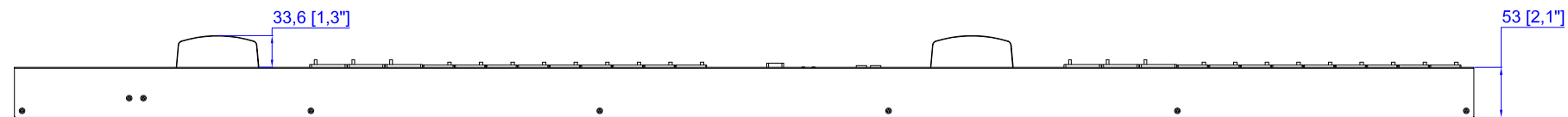
See VIEW C

See VIEW A

See VIEW B



Knockout size (opening): 1.375" for Ø1" flexible steel conduit cable and fitting



NOTES:

1. ALL DIMENSIONS ARE MILLIMETERS [INCHES].



DO NOT SCALE DRAWING

SHEET 1 OF 1

THIS DRAWING AND SPECIFICATIONS HEREIN ARE THE PROPERTY OF RARITAN, INC. AND SHALL NOT BE COPIED, REPRODUCED OR USED, IN WHOLE OR IN PART, AS THE BASIS FOR THE MANUFACTURE OR SALE OF ITEMS WITHOUT WRITTEN PERMISSION FROM RARITAN, INC. THIS DRAWING IS BASED UPON LATEST AVAILABLE INFORMATION AND IS SUBJECT TO CHANGE WITHOUT NOTICE.

TITLE:
iPDU Zero U,
Single phase 24A / 200V-240V
Plug Type :24A Terminal
Output Type: (18)Locking C13+(6)Locking C19

DWG NO. **MPX2-1495YV-E2 & MPX2-1495YV-E2D3** REV. **0B**

Drawing Maker:	EVA LIN	Apr. 10, 2015
Design Engineer:	Sam_L	Apr. 10, 2015
Approver:	Tom_H	Apr. 10, 2015