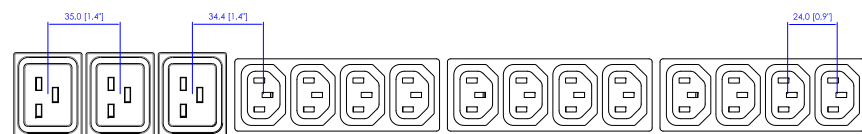
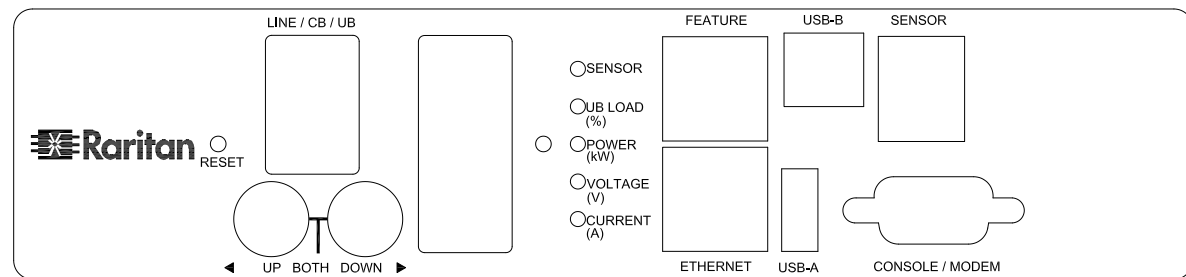


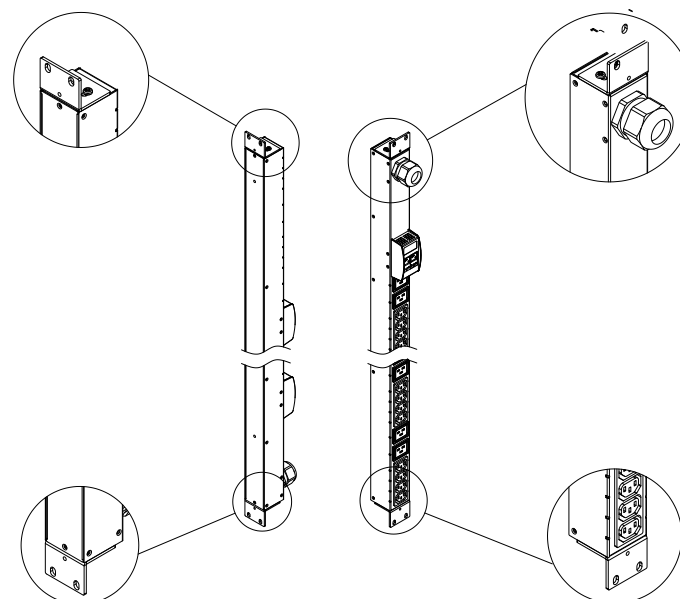
IEC60309 32A  
VIEW A



VIEW B



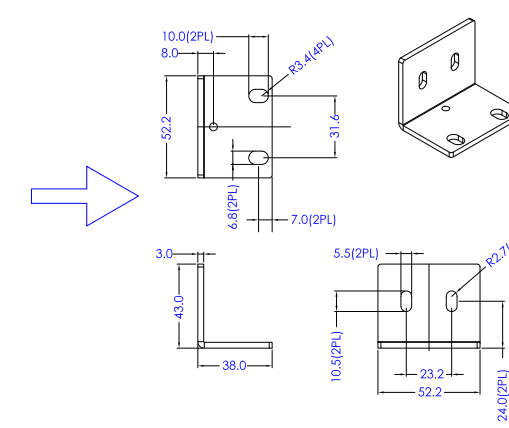
VIEW C



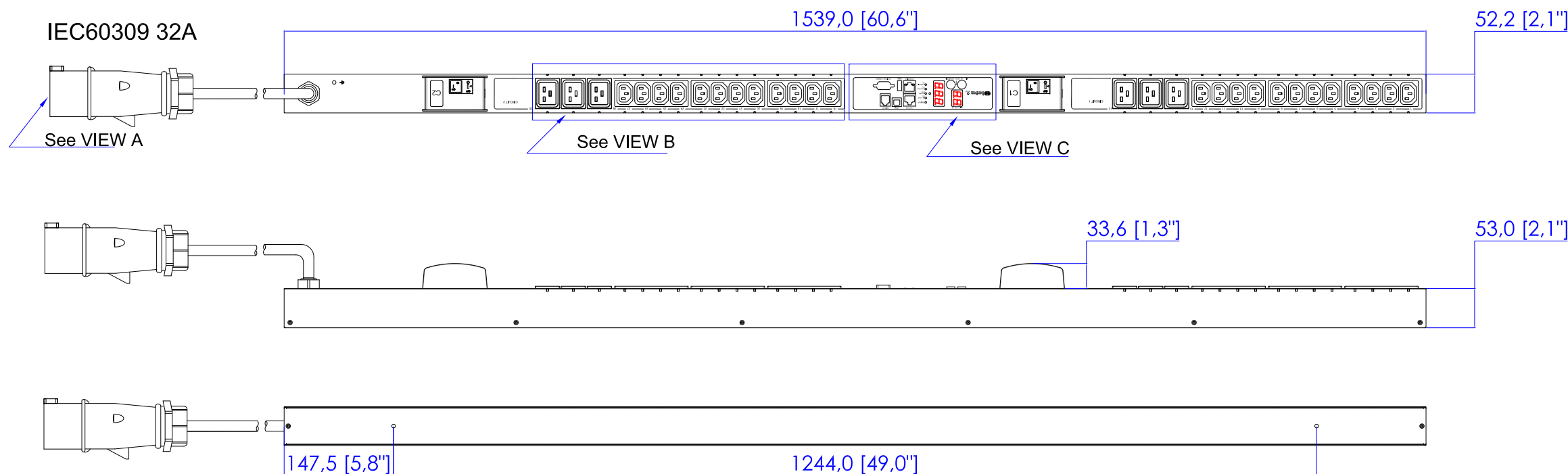
Option A

Option B

Rack mount L type detailed



Mounting options



NOTES:  
1. ALL DIMENSIONS ARE MILLIMETERS [INCHES].



DO NOT SCALE DRAWING  
SHEET 1 OF 1

THIS DRAWING AND SPECIFICATIONS HEREIN ARE THE PROPERTY OF RARITAN, Inc. AND SHALL NOT BE COPIED, REPRODUCED OR USED, IN WHOLE OR IN PART, AS THE BASIS FOR THE MANUFACTURE OR SALE OF ITEMS WITHOUT WRITTEN PERMISSION FROM RARITAN, Inc. THIS DRAWING IS BASED UPON LATEST AVAILABLE INFORMATION AND IS SUBJECT TO CHANGE WITHOUT NOTICE.

TITLE:  
iPDU Zero U,  
Single Phase, 32A/200V-240V,  
Plug Type : IEC60309 32A,  
Outlet Type : (24)IEC320 C13,(6)IEC320 C19

DWG NO. **MPX2-1842**

REV. **A**

DRAWN :	EVA LIN	Jun. 20,2013
ENGINEER:	Siang_H	Jun. 20,2013
APPROVED:	Tom_H	Jun. 20,2013