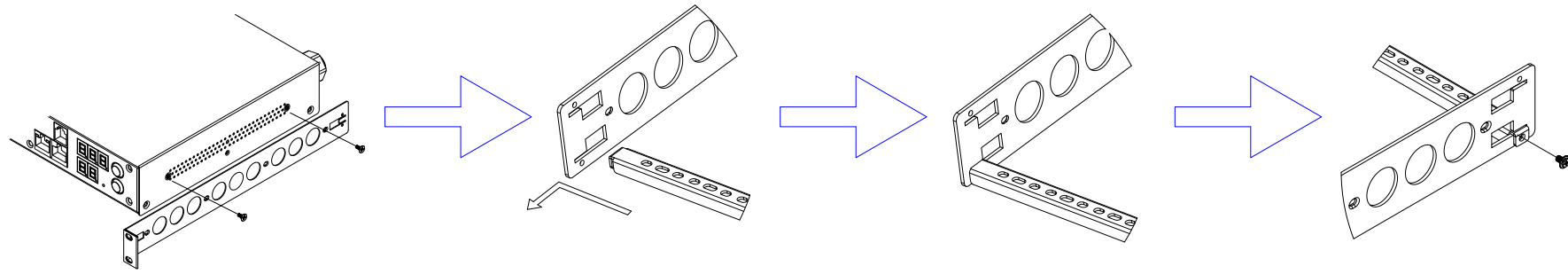
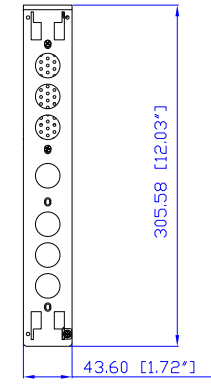


Clipsal 56P320

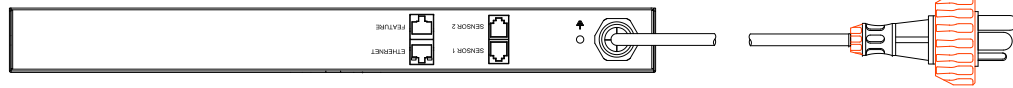
VIEW A



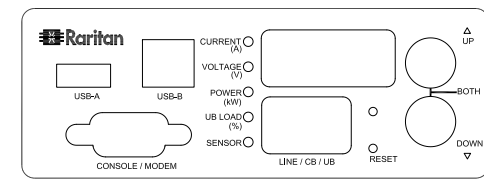
VIEW B



Rear

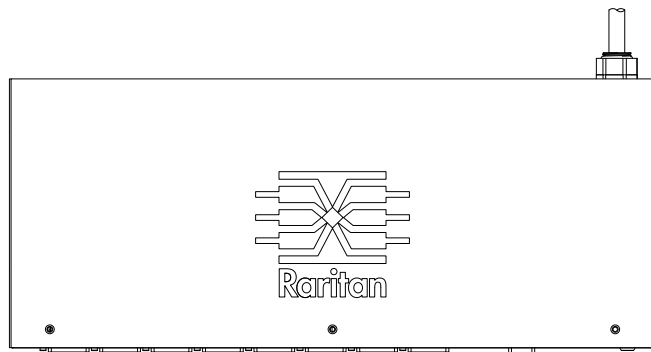


Clipsal 56P320

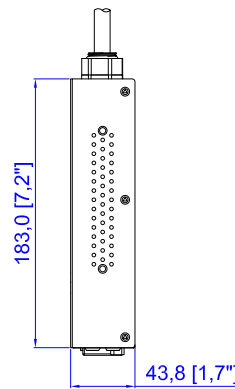


VIEW C

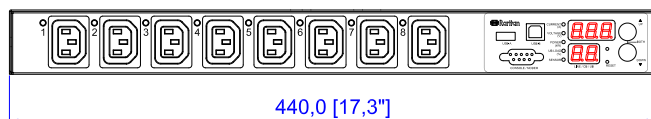
TOP



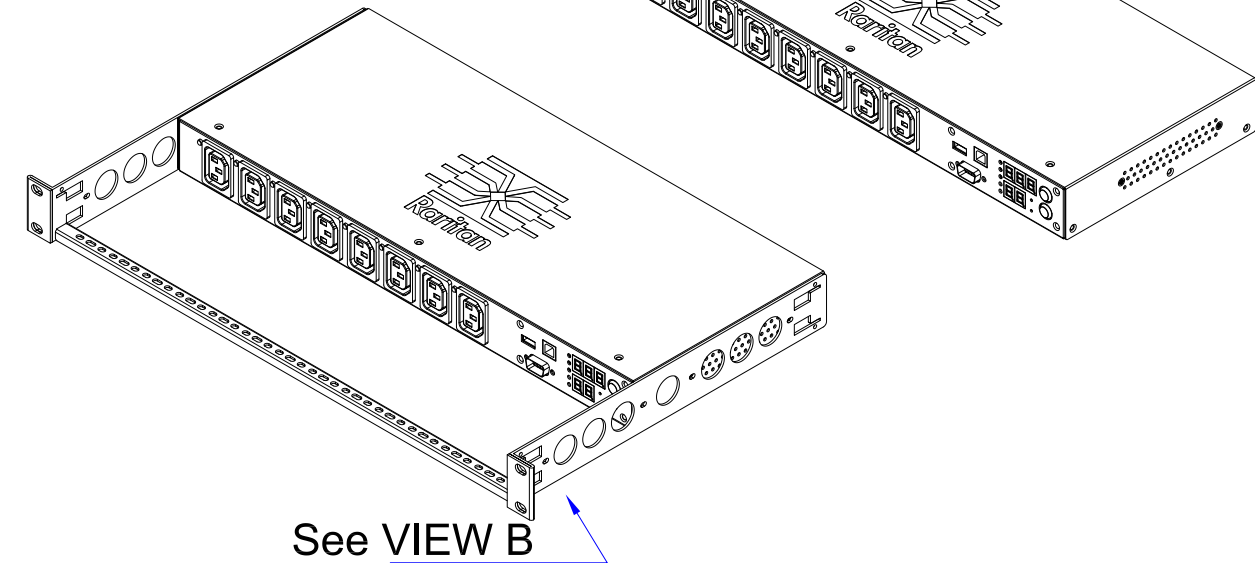
See VIEW A



Front



See VIEW C



See VIEW B

NOTES:
ALL DIMENSIONS ARE MILLIMETERS[INCHES].



PROJECTION
THIRD ANGLE

DO NOT SCALE DRAWING

SHEET 1 OF 1

THIS DRAWING AND SPECIFICATIONS HEREIN ARE THE PROPERTY OF RARITAN, INC. AND SHALL NOT BE COPIED, REPRODUCED OR USED, IN WHOLE OR IN PART, AS THE BASIS FOR THE MANUFACTURE OR SALE OF ITEMS WITHOUT WRITTEN PERMISSION FROM RARITAN, INC. THIS DRAWING IS BASED UPON LATEST AVAILABLE INFORMATION AND IS SUBJECT TO CHANGE WITHOUT NOTICE.

TITLE: iPDU One U,
Single Phase, 20A/240V
Input: Clipsal 56P320 ,
Output (8)IEC320 C13

DWG NO. **MPX2-2190A1R** REV. **A**

DRAWN :	Eva LIN	June 14, 2011
ENGINEER:	Sam_L	June 15, 2011
APPROVED:	Kevin_C	June 16, 2011