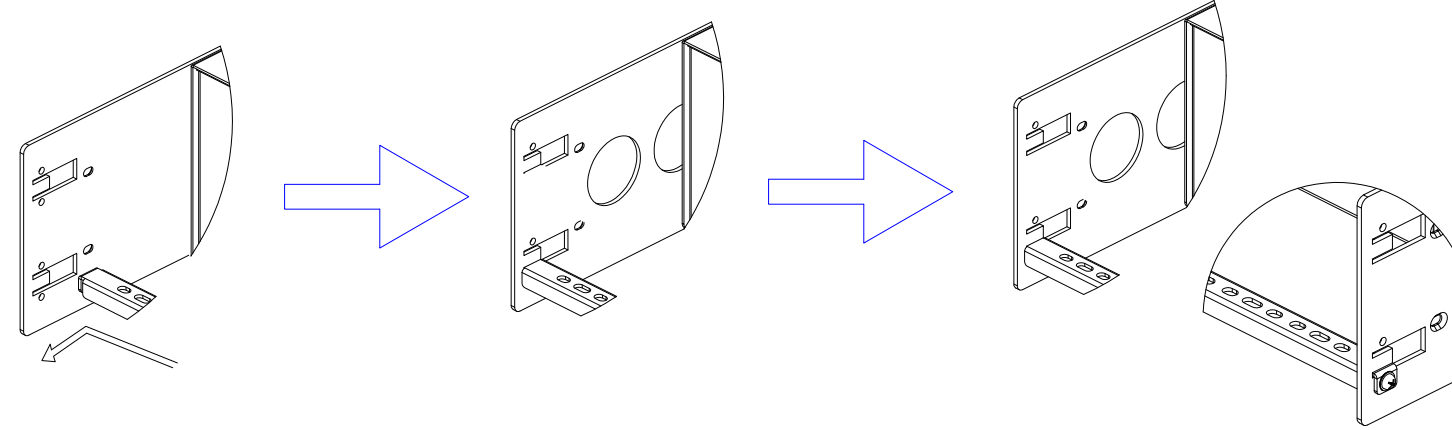


NEMA L6-30P

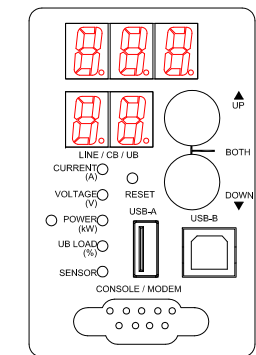
VIEW A



VIEW B

88.10 [3.471"]

365.23 [14.390"]



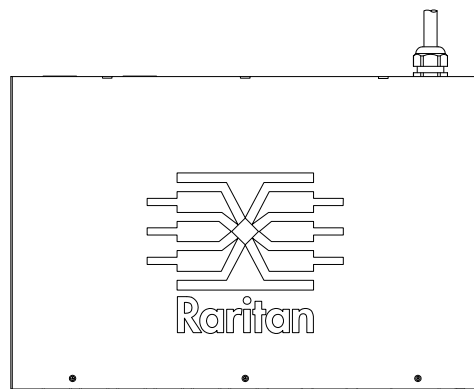
VIEW C

Rear



See VIEW A

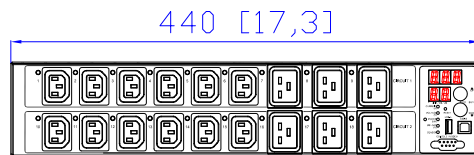
TOP



293 [11,5]

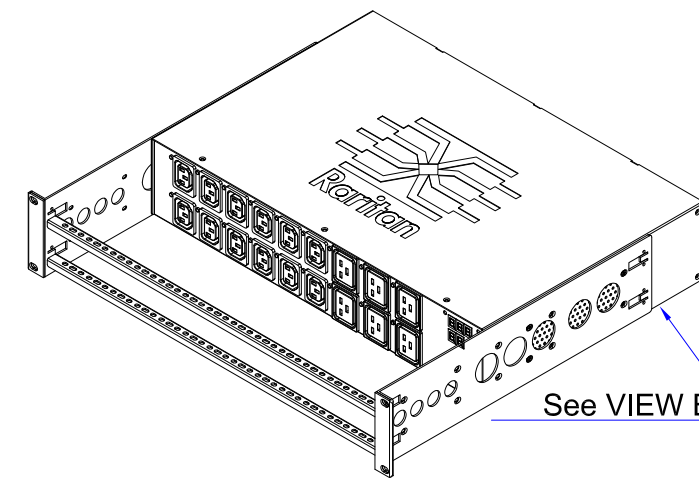
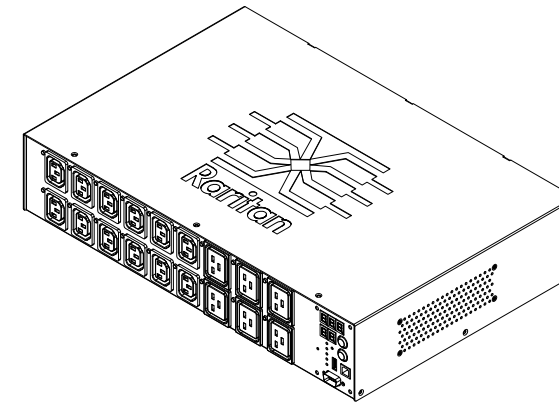
88 [3,5]

Front



440 [17,3]

See VIEW C



See VIEW B

NOTES:
ALL DIMENSIONS ARE MILLIMETERS[INCHES].



PROJECTION
THIRD ANGLE

DO NOT SCALE DRAWING

SHEET 1 OF 1

THIS DRAWING AND SPECIFICATIONS HEREIN ARE THE PROPERTY OF RARITAN, INC. AND SHALL NOT BE COPIED, REPRODUCED OR USED, IN WHOLE OR IN PART, AS THE BASIS FOR THE MANUFACTURE OR SALE OF ITEMS WITHOUT WRITTEN PERMISSION FROM RARITAN, INC. THIS DRAWING IS BASED UPON LATEST AVAILABLE INFORMATION AND IS SUBJECT TO CHANGE WITHOUT NOTICE.

TITLE:
iPDU Two U
Single phase, 24A/200V-240V
Plug Type :NEMA L6-30P
Output Type:(12) C13,(6) C19

DWG NO.

MPX2-2781R

REV.

0A

Drawing Maker: Eva Lin Apr. 24, 2015

Design Engineer: Sam_L Apr. 24, 2015

Approver: Tom_H Apr. 24, 2015