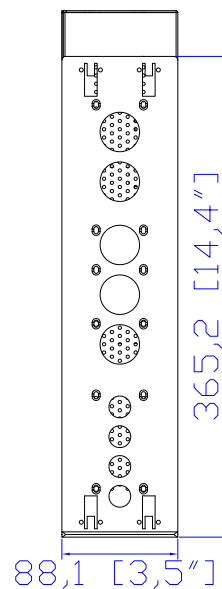
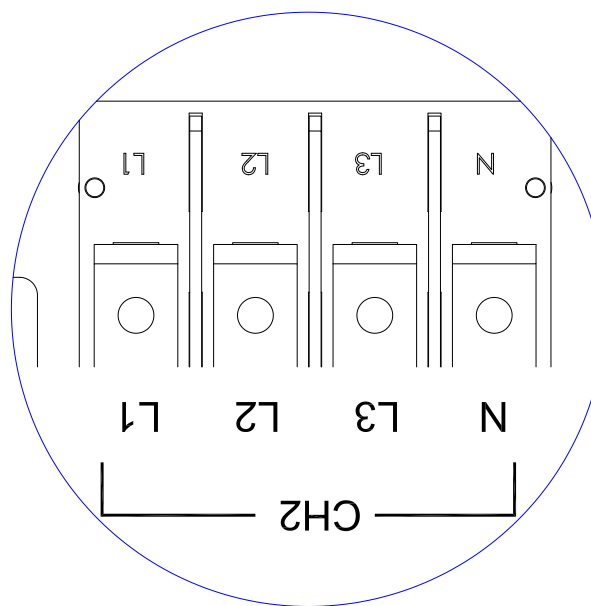


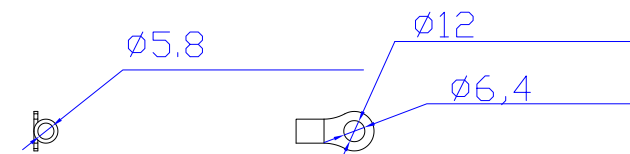
VIEW A



VIEW B

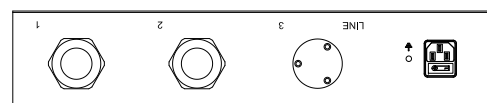


VIEW C

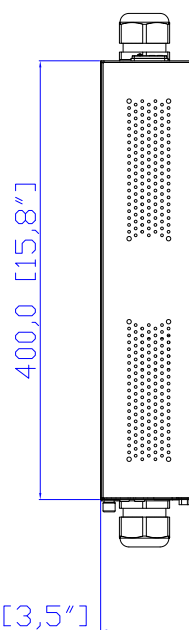
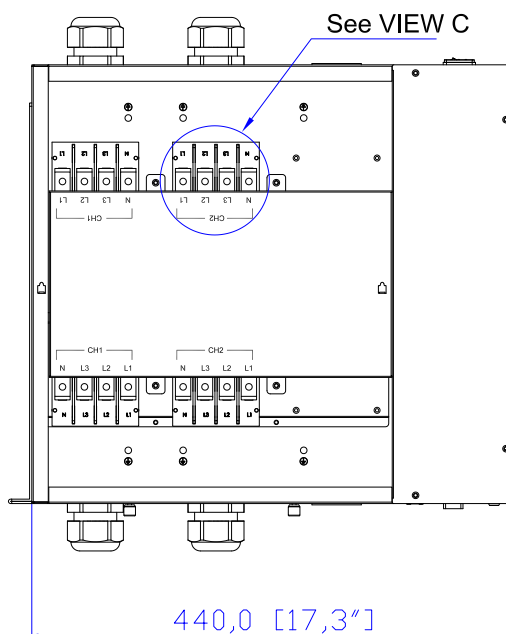


1. KST RNBS 14-6 or equivalent terminals for 6 AWG Wire
2. Inside diameter 6.4 mm & Outside diameter 12mm ring for M6 screw

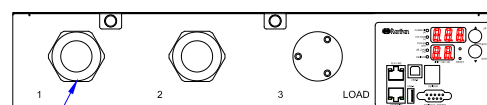
Rear



Top

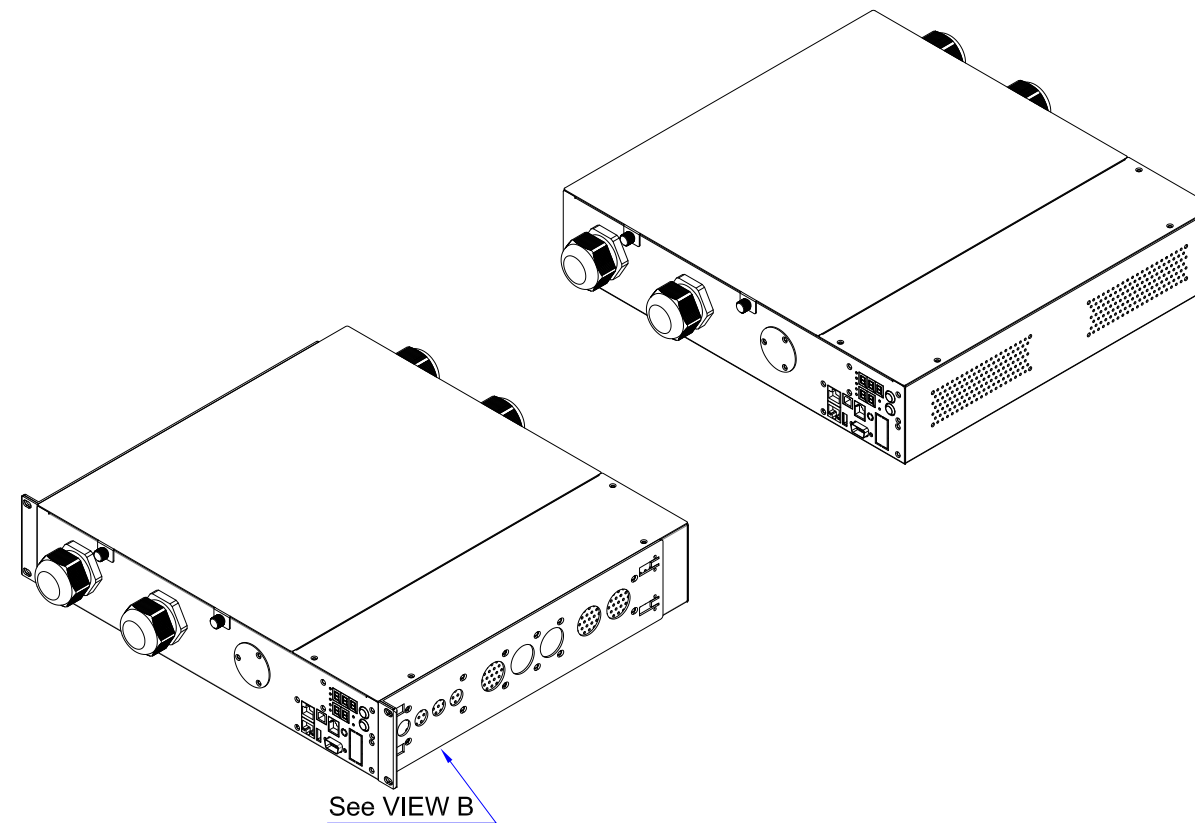


Front



M40 Cable Gland
Assembly Wire Range: 22~32mm

See VIEW A



See VIEW B

NOTES:
ALL DIMENSIONS ARE MILLIMETERS[INCHES].

		PROJECTION THIRD ANGLE	DO NOT SCALE DRAWING	TITLE: iPDU Two U, Single Phase, 63A/190V~415V Input Plug:63A Terminal 3PY (2) , Output Plug:63A Terminal 3PY (2)
			SHEET 1 OF 1	
DRAWN : Eva Lin	Aug. 05,2011	THIS DRAWING AND SPECIFICATIONS HEREIN ARE THE PROPERTY OF RARITAN, INC. AND SHALL NOT BE COPIED, REPRODUCED OR USED, IN WHOLE OR IN PART, AS THE BASIS FOR THE MANUFACTURE OR SALE OF ITEMS WITHOUT WRITTEN PERMISSION FROM RARITAN, INC. THIS DRAWING IS BASED UPON LATEST AVAILABLE INFORMATION AND IS SUBJECT TO CHANGE WITHOUT NOTICE.		DWG NO. MPX2-3280
ENGINEER: Kenny_C	Aug. 05,2011			
APPROVED: Tom_H	Aug. 05,2011			