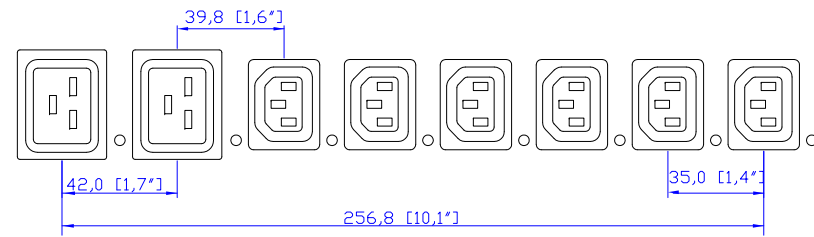
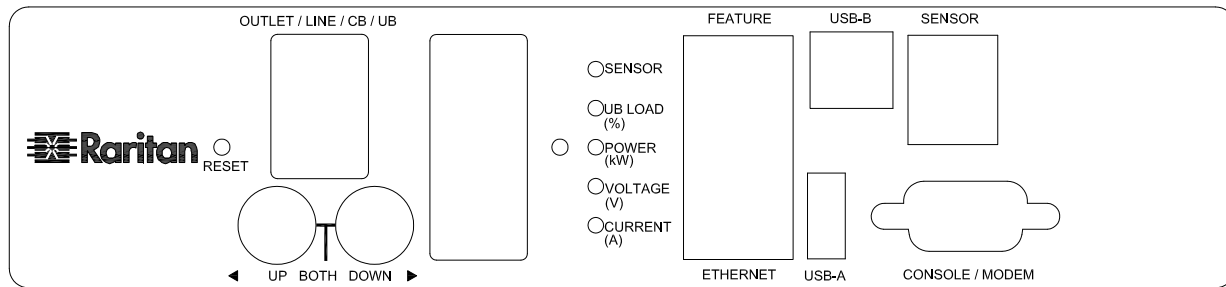


IEC60309 32A

VIEW A

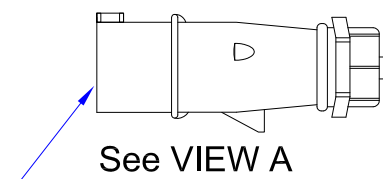


VIEW B

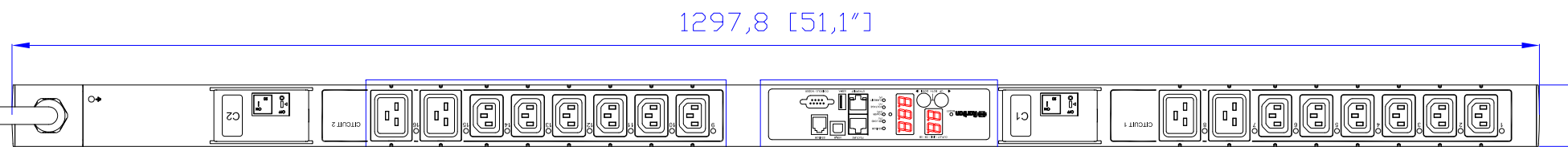


VIEW C

IEC60309 32A



See VIEW A

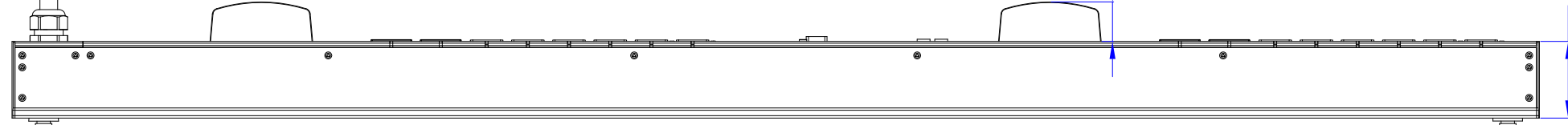
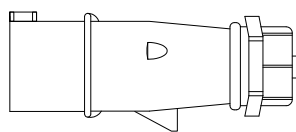


1297,8 [51,1"]

52,2 [2,1"]

See VIEW B

See VIEW C



33,6 [1,3"]

65,3 [2,6"]

26,9 [1,1"]

1244,0 [49,0"]

NOTES:

1.ALL DIMENSIONS ARE MILLIMETERS[INCHES].



DO NOT SCALE DRAWING

SHEET 1 OF 1

THIS DRAWING AND SPECIFICATIONS HEREIN ARE THE PROPERTY OF RARITAN, Inc. AND SHALL NOT BE COPIED, REPRODUCED OR USED, IN WHOLE OR IN PART, AS THE BASIS FOR THE MANUFACTURE OR SALE OF ITEMS WITHOUT WRITTEN PERMISSION FROM RARITAN, Inc. THIS DRAWING IS BASED UPON LATEST AVAILABLE INFORMATION AND IS SUBJECT TO CHANGE WITHOUT NOTICE.

TITLE:
iPDU One U,
Single Phase, 32A/240V
Plug Type :IEC60309 32A
Output Type:(12)IEC320 C13 , (4)IEC320 C19

DWG NO. **MPX2-5397 & MPX2-4397** REV. **A**

DRAWN :	EVA LIN	Jun. 30, 2014
ENGINEER:	Kenny_C	Jun. 30, 2014
APPROVED:	Tom H	Jun. 30, 2014