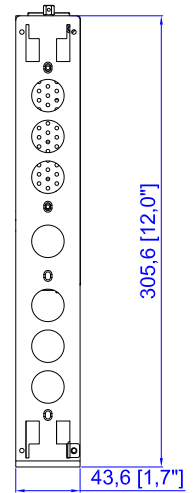
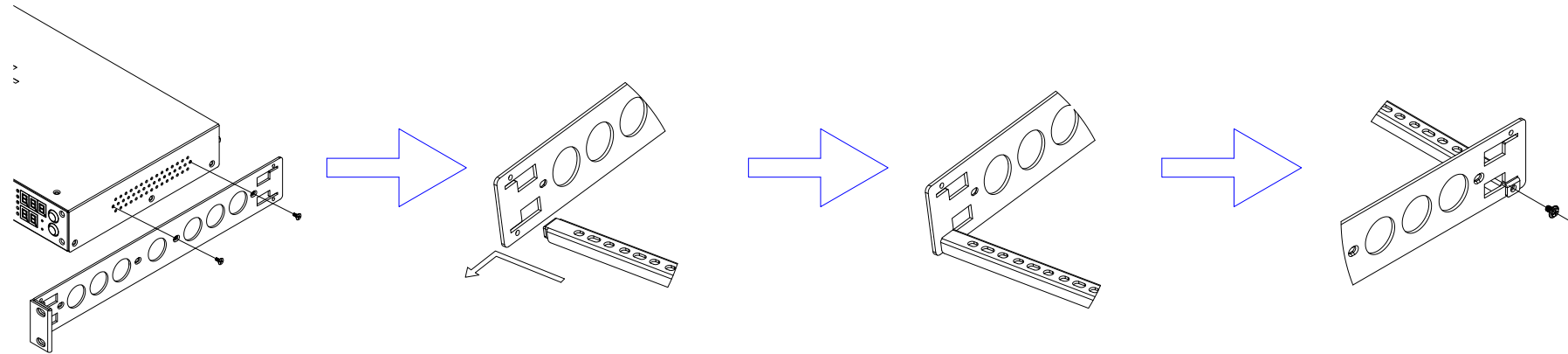
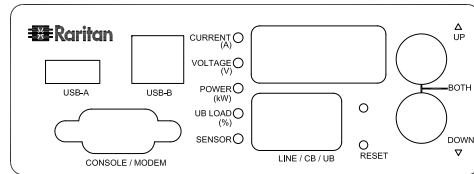


Clipsal 56P315



VIEW A

VIEW B



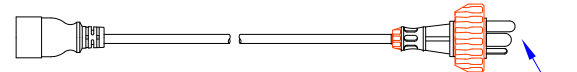
VIEW C

Rear



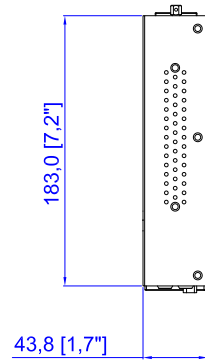
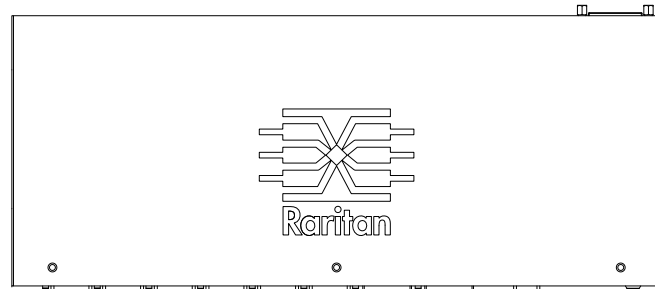
IEC60320 C19

Clipsal 56P315

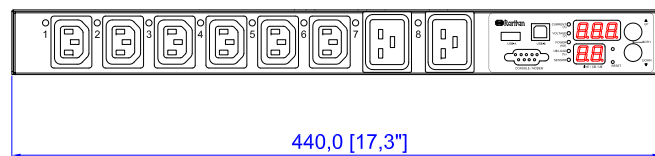


See VIEW A

TOP

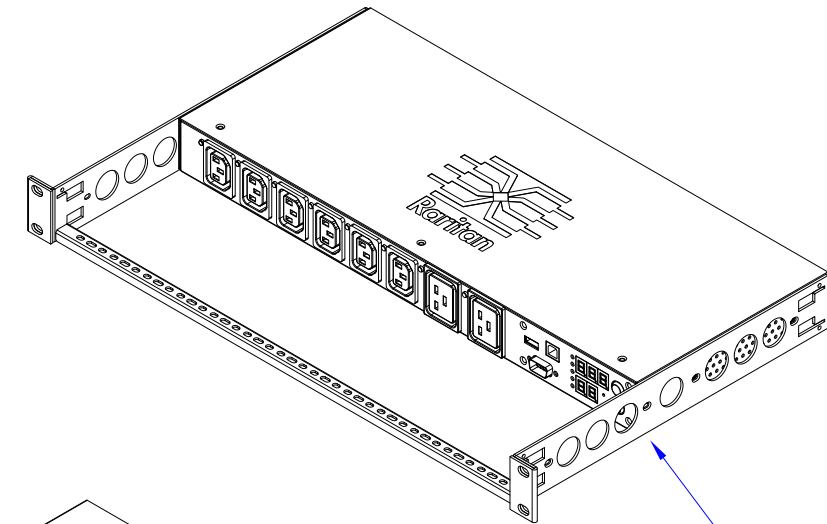


Front



See VIEW C

440,0 [17,3"]



See VIEW B

NOTES:
1. ALL DIMENSIONS ARE MILLIMETERS [INCHES].



DO NOT SCALE DRAWING
SHEET 1 OF 1
THIS DRAWING AND SPECIFICATIONS HEREIN ARE THE PROPERTY OF RARITAN, INC. AND SHALL NOT BE COPIED, REPRODUCED OR USED, IN WHOLE OR IN PART, AS THE BASIS FOR THE MANUFACTURE OR SALE OF ITEMS WITHOUT WRITTEN PERMISSION FROM RARITAN, INC. THIS DRAWING IS BASED UPON LATEST AVAILABLE INFORMATION AND IS SUBJECT TO CHANGE WITHOUT NOTICE.

DRAWN :	Eva Lin	June 25, 2012
ENGINEER:	Siang_h	June 25, 2012
APPROVED:	Tom_H	June 25, 2012

TITLE: iPDU One U,
Single Phase, 15A / -240V
Inlet Type: IEC320 C20 ,
Plug Type: Clipsal 56P315
Output Type: (6) IEC320 C13, (2) IEC320 C19 15A

DWG NO. MPX2-5193A4R & MPX2-4193A4R
REV. A