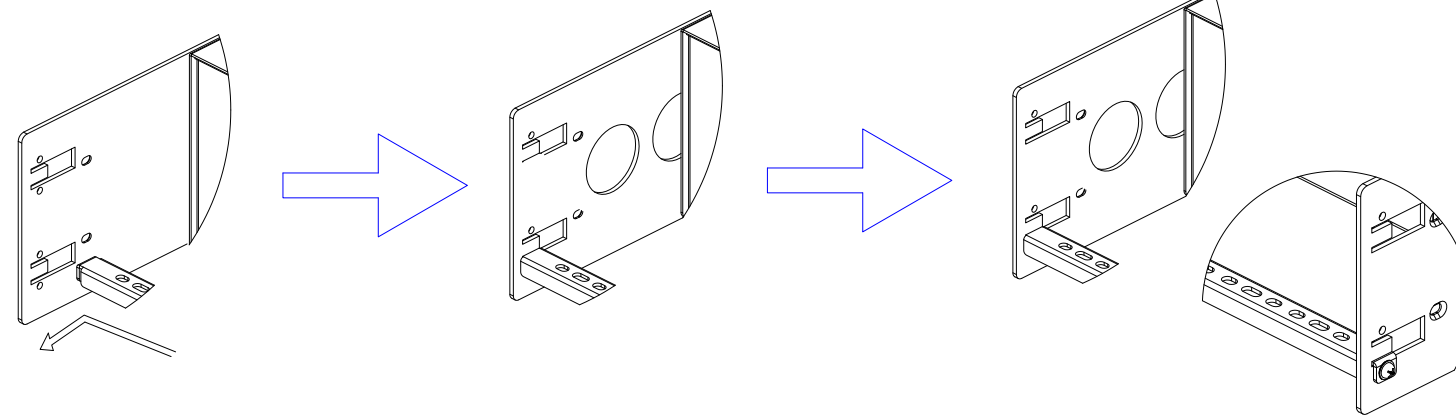


NEMA L6-30P

VIEW A

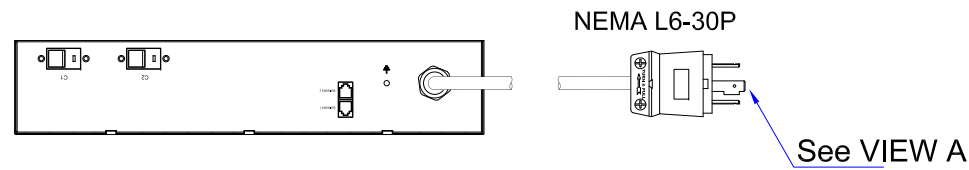


VIEW B

88.10 [3.471"]

365.23 [14.390"]

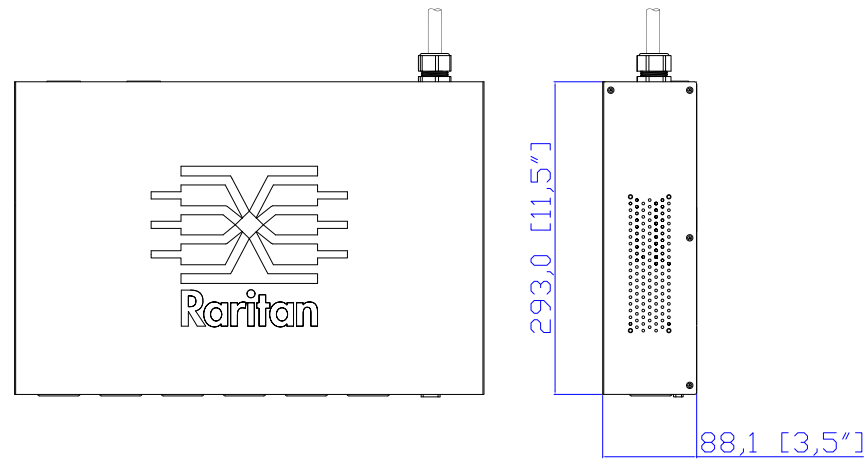
Rear



NEMA L6-30P

See VIEW A

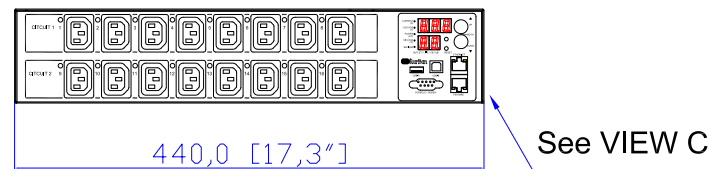
TOP



293,0 [11,5"]

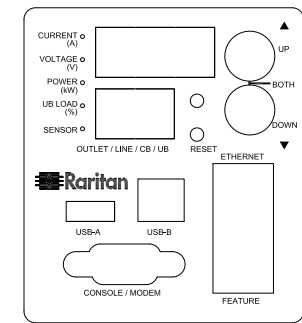
88,1 [3,5"]

Front

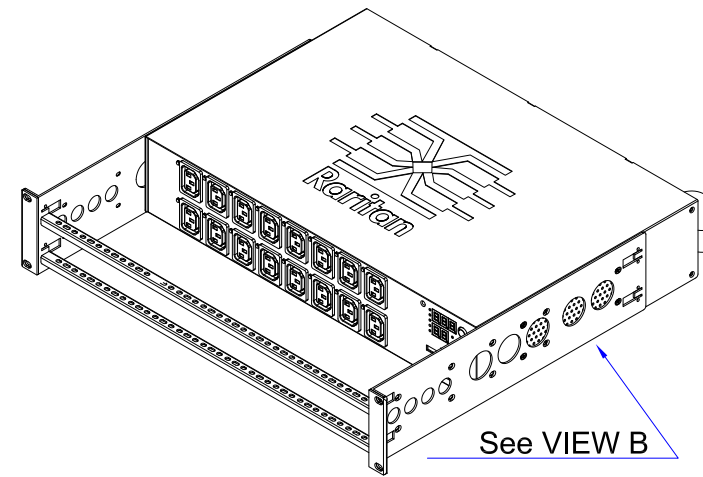


440,0 [17,3"]

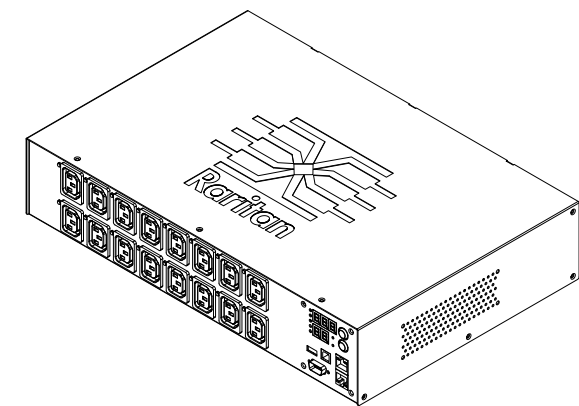
See VIEW C



VIEW C



See VIEW B



NOTES:
ALL DIMENSIONS ARE MILLIMETERS[INCHES].



PROJECTION
THIRD ANGLE

DO NOT SCALE DRAWING

SHEET 1 OF 1

DRAWN : Eva Lin Jan. 18,2012
ENGINEER: Kevin_L Jan. 18,2012
APPROVED: Tom_H Jan. 18,2012

THIS DRAWING AND SPECIFICATIONS HEREIN ARE THE PROPERTY OF RARITAN, INC. AND SHALL NOT BE COPIED, REPRODUCED OR USED, IN WHOLE OR IN PART, AS THE BASIS FOR THE MANUFACTURE OR SALE OF ITEMS WITHOUT WRITTEN PERMISSION FROM RARITAN, INC. THIS DRAWING IS BASED UPON LATEST AVAILABLE INFORMATION AND IS SUBJECT TO CHANGE WITHOUT NOTICE.

TITLE: iPDU Two U,
Single phase, 24A/200V-240V
Input Type:NEMA L6-30P
Output Type:(16)IEC320 C13

DWG NO. **MPX2-5386R & MPX2-4386R**

REV. **A**