

Technical Specifications / Engineering Submittals

Raritan Model Number: PX3-1080N-E2M5

rev20250209

LINE DRAWING



FEATURES

| | |
|-------------------------------------|--|
| Energy Metering | Voltage (V), Current (A), Active Power (kW), Real Power (kVA), Energy (kWh), Power Factor |
| Metering Accuracy | ISO/IEC 62053-21 1% (see page 3 for details) |
| Metering per Input Line | Yes |
| Metering per Branch Circuit Breaker | Yes |
| Metering per Output Receptacle | No |
| Remote Outlet Switching | No |
| Environmental Sensor Ready | Yes |
| Replaceable Controller | Yes |
| Residual Current Monitoring | Yes, Type A (Detects AC leakage and is rated down to 6mA (IEC62020) leakage current across all lines) |
| Compatible Sensors | Temperature, Humidity, Air Flow, Differential Pressure, Water Leak, and Contact Closure |
| Networking | Gigabit (10/100/1000 BaseT) Ethernet port; secondary, redundant (10/100/1000 BaseT) Ethernet port. Optional WiFi (802.11a/b/g/n) |
| Remote Management | HTTP(s); SSH; Telnet; RS-232 (Serial); Power IQ; SNMP version v2/v3; SMTP; JSON-RPC; Modbus over TCP |
| Cascading | Yes, Max 32 PDUs can be daisy chained using a USB connection and 32 PDUs using Ethernet connection |
| Onboard Display | Color, matrix LCD display : Voltage, current, or active power (per line or per breaker); Alarms; Configuration information (name, ratings, IP / Networking information); Auto-flip orientation |
| Embedded Processor | ARM Cortex A5 536MHZ (Atmel A5D35A), 16MB SPI Flash, 64MB DDR2 RAM |

Technical Specifications / Engineering Submittals

Raritan Model Number: PX3-1080N-E2M5

rev20250209

INPUT

| | |
|-----------------------|--------------------------------|
| Input Plug | Cord (N/A) |
| Cord Length | 3 meters (9.84 feet) standard |
| Cord Entry | Bottom-front feed |
| Cable Type | N/A |
| Number of Power Cords | 1 |
| Maximum Input Current | 32A |
| Nominal Input Voltage | 230V |
| Rated Input Voltage | 200 - 240V |
| Input Frequency | 50/60Hz |
| Power Capacity | 6.4kVA at 200V, 7.7kVA at 240V |

OUTPUT

| | |
|----------------------------------|---|
| Nominal Output Voltage | 230V |
| Rated Output Voltage | 200 - 240V |
| Receptacles (Output Connections) | (24) IEC60320 C13 Locking, 10A (8) IEC60320 C19 Locking, 16A |
| Securelock Support | Yes |
| Cord Retention | No |
| Overload Protection | (2) LEGBXA6-16, 5KAIC |

PHYSICAL

| | |
|-----------------------------|--|
| Color | Black powder coat (custom colors available) |
| Unit Dimensions (WxDxH) | 2.1" x 2.2" x 70.1" ; 52mm x 55mm x 1780mm |
| Unit Weight | TBD |
| Shipping Weight | TBD |
| Shipping Dimensions (WxDxH) | 9.06" x 4.65" x 75.2" ; 230mm x 118mm x 1910mm |
| Mounting | RACK-KIT-PX2-1K-ZU |

Technical Specifications / Engineering Submittals

Raritan Model Number: PX3-1080N-E2M5

rev20250209

ENVIRONMENTAL

| | |
|-----------------------------|----------|
| Operating Temperature | 60°C |
| Operating Relative Humidity | 85% |
| Operating Elevation | 0-6000ft |

CONFORMANCE

| | |
|----------------------|---|
| Regulatory Approvals | CE, Canada ICES-003, Part 15 Class A of the FCC rules, RoHS compliant |
| Warranty | Standard 2 years manufacturer warranty |

ACCURACY

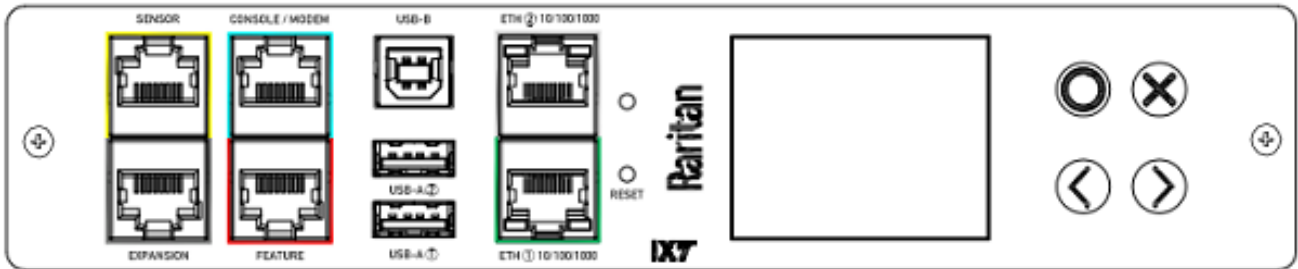
| | Input Measurement |
|---------------------------|---------------------------|
| LCD & GUI Current | ±1% at 0.1 A resolution |
| Voltage | ±1% at 0.1 V resolution |
| Active Power | ±1% at 1 W resolution |
| Apparent Power | ±1% at 1 VA resolution |
| Power Factor | ±1% at 0.1 resolution |
| Active Energy | ±1% at 0.1 kWh resolution |
| Branch Measurement | |
| Current | ±1% at 0.1 A resolution |

Technical Specifications / Engineering Submittals

Raritan Model Number: PX3-1080N-E2M5

rev20250209

CONTROL PANEL

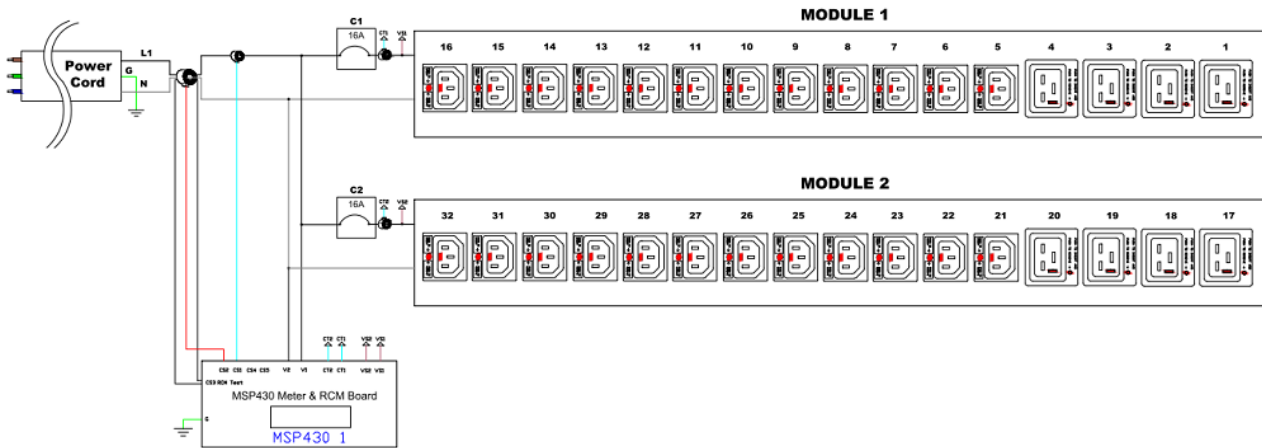


Technical Specifications / Engineering Submittals

Raritan Model Number: PX3-1080N-E2M5

rev20250209

ELECTRICAL (ONE LINE) DIAGRAM

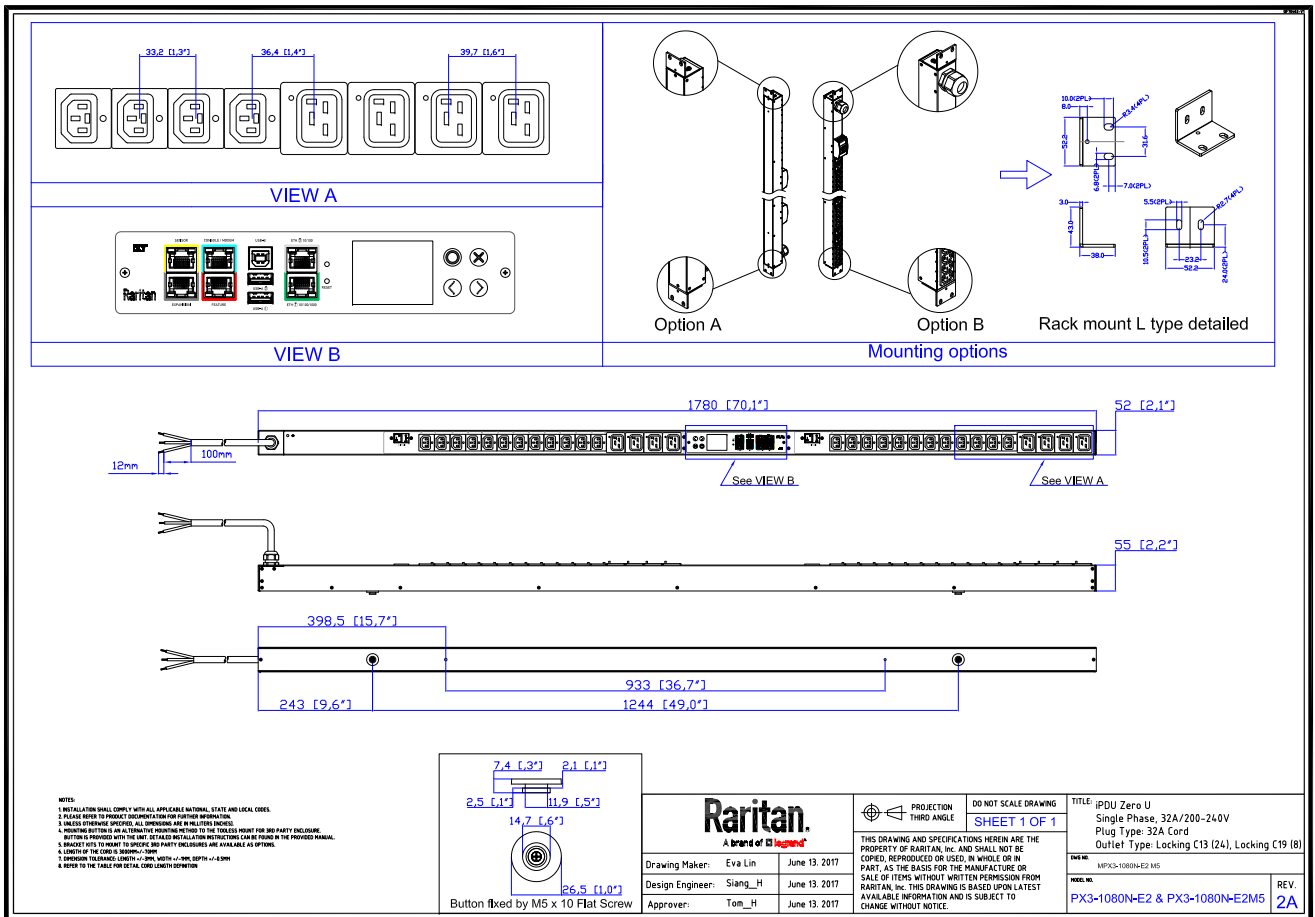


Technical Specifications / Engineering Submittals

Raritan Model Number: PX3-1080N-E2M5

rev20250209

MECHANICAL DIAGRAM

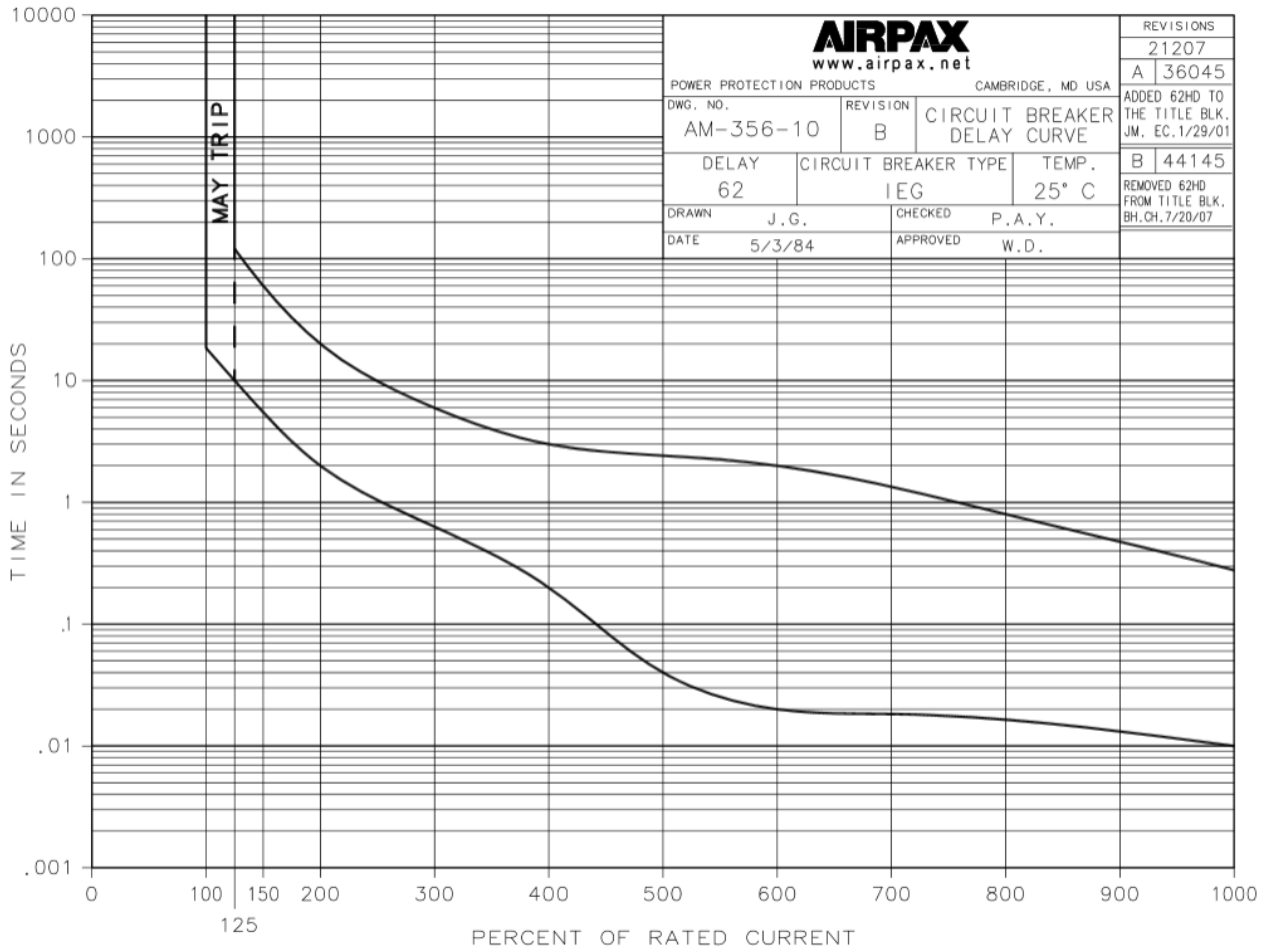


Technical Specifications / Engineering Submittals

Raritan Model Number: PX3-1080N-E2M5

rev20250209

TRIP CURVE



This file generated on: Sun, February 09, 2025 - 22:08:52