

## Technical Specifications / Engineering Submittals

Raritan Model Number: PX3-5911N-M1801V2

rev20250625

### LINE DRAWING



### FEATURES

|                                     |  |
|-------------------------------------|--|
| Energy Metering                     | Voltage (V), Current (A), Active Power (kW), Real Power (kVA), Energy (kWh), Power Factor  |
| Metering Accuracy                   | ISO/IEC 62053-21 1% (see page 3 for details)   |
| Metering per Input Line             | Yes  |
| Metering per Branch Circuit Breaker | Yes  |
| Metering per Output Receptacle      | Yes  |
| Remote Outlet Switching             | Yes  |
| Environmental Sensor Ready          | Yes  |
| Replaceable Controller              | Yes  |
| Residual Current Monitoring         | Yes, Type B (Three channel detection of AC and DC leakage current (IEC62020 range: 15mA to 300mA). Detection on each line)   |
| Compatible Sensors                  | Temperature, Humidity, Air Flow, Differential Pressure, Water Leak, and Contact Closure  |
| Networking                          | Gigabit (10/100/1000 BaseT) Ethernet port; secondary, redundant (10/100/1000 BaseT) Ethernet port. Optional WiFi (802.11a/b/g/n)   |
| Remote Management                   | HTTP(s); SSH; Telnet; RS-232 (Serial); Power IQ; SNMP version v2/v3; SMTP; JSON-RPC; Modbus over TCP   |
| Cascading                           | Yes, Max 32 PDUs can be daisy chained using a USB connection and 32 PDUs using Ethernet connection   |
| Onboard Display                     | Color, matrix LCD display : Voltage, current, or active power (per line, per breaker, or per receptacle / outlet); Alarms; Configuration information (name, ratings, IP / Networking information); Auto-flip orientation |
| Embedded Processor                  | ARM Cortex A5 536MHZ (Atmel A5D35A), 16MB SPI Flash, 64MB DDR2 RAM   |

## Technical Specifications / Engineering Submittals

Raritan Model Number: PX3-5911N-M1801V2

rev20250625

### INPUT

|                       |                                  |
|-----------------------|----------------------------------|
| Input Plug            | Cord (N/A)                       |
| Cord Length           | 3 meters (9.84 feet) standard    |
| Cord Entry            | Bottom-front feed                |
| Cable Type            | N/A                              |
| Number of Power Cords | 1                                |
| Maximum Input Current | 32A                              |
| Nominal Input Voltage | 400V 3 phase                     |
| Rated Input Voltage   | 380 - 415V 3 phase               |
| Input Frequency       | 50/60Hz                          |
| Power Capacity        | 21.1kVA at 380V, 23.0kVA at 415V |

### OUTPUT

|                                  |   |
|----------------------------------|---|
| Nominal Output Voltage           | 230V  |
| Rated Output Voltage             | 220 - 240V                                  |
| Receptacles (Output Connections) | (42) IEC320 C13, 10A<br>(6) IEC320 C19, 16A |
| Securelock Support               | Yes   |
| Cord Retention                   | Yes   |
| Overload Protection              | (6) LEJBXA6-16, 10KAIC                      |

### PHYSICAL

|                             |   |
|-----------------------------|---|
| Color                       | Black powder coat (custom colors available)     |
| Unit Dimensions (WxDxH)     | 3.5" x 2.6" x 70.1" ; 89mm x 65mm x 1780mm      |
| Unit Weight                 | 9.5 kg  |
| Shipping Weight             | 13.2 kg   |
| Shipping Dimensions (WxDxH) | 14.76" x 6.5" x 77.56" ; 375mm x 165mm x 1970mm |
| Mounting                    | Tool-less button mount                          |

## Technical Specifications / Engineering Submittals

Raritan Model Number: PX3-5911N-M1801V2

rev20250625

### ENVIRONMENTAL

|                             |          |
|-----------------------------|----------|
| Operating Temperature       | 60°C     |
| Operating Relative Humidity | 85%      |
| Operating Elevation         | 0-6000ft |

### CONFORMANCE

|                      |   |
|----------------------|---|
| Regulatory Approvals | CE, Canada ICES-003, Part 15 Class A of the FCC rules, RoHS compliant |
| Warranty             | Standard 2 years manufacturer warranty                                |

### ACCURACY

|                   | Input Measurement         | Output Measurement        |
|-------------------|---------------------------|---------------------------|
| LCD & GUI Current | ±1% at 0.1 A resolution   | ±1% at 0.1 A resolution   |
| Voltage           | ±1% at 0.1 V resolution   | ±1% at 0.1 V resolution   |
| Active Power      | ±1% at 1 W resolution     | ±1% at 1 W resolution     |
| Apparent Power    | ±1% at 1 VA resolution    | ±1% at 1 VA resolution    |
| Power Factor      | ±1% at 0.1 resolution     | ±1% at 0.1 resolution     |
| Active Energy     | ±1% at 0.1 kWh resolution | ±1% at 0.1 kWh resolution |

### Branch Measurement

|         |                         |
|---------|-------------------------|
| Current | ±1% at 0.1 A resolution |
|---------|-------------------------|

## Technical Specifications / Engineering Submittals

Raritan Model Number: PX3-5911N-M1801V2

rev20250625

### CONTROL PANEL

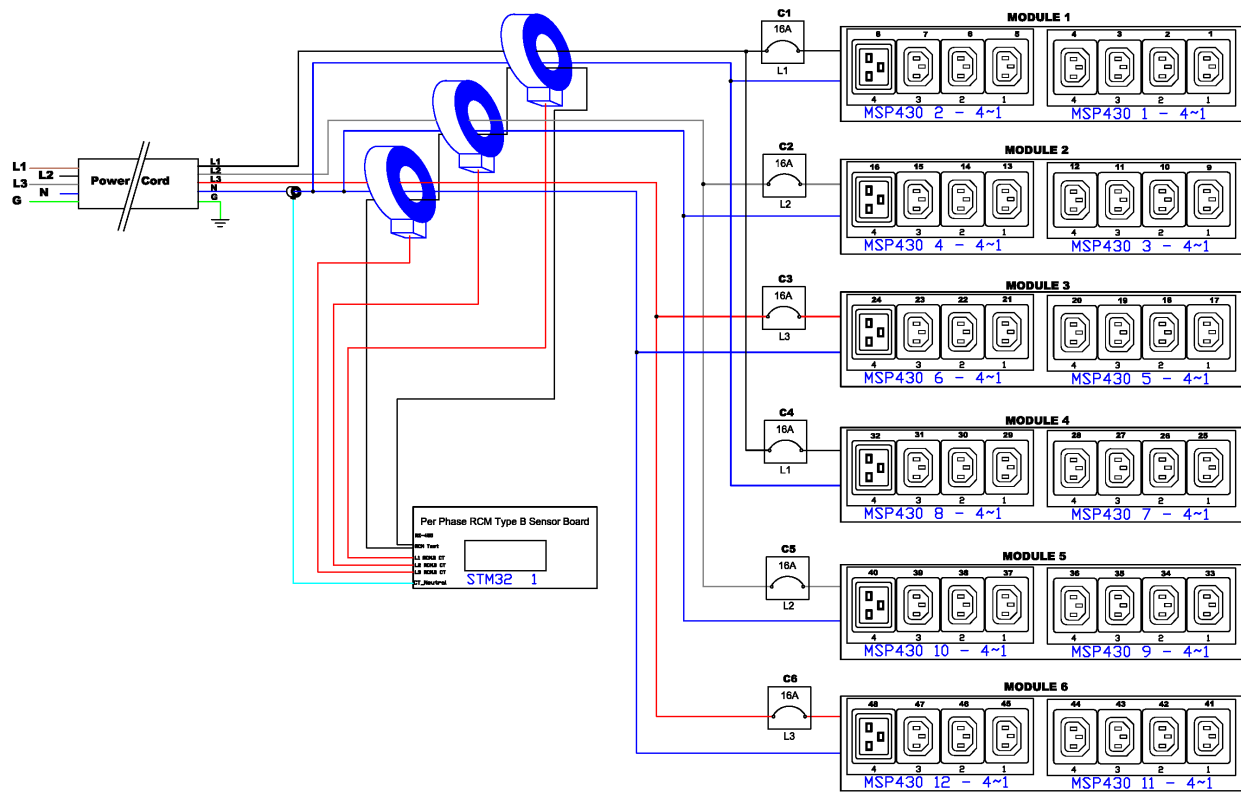


## Technical Specifications / Engineering Submittals

Raritan Model Number: PX3-5911N-M1801V2

rev20250625

### ELECTRICAL (ONE LINE) DIAGRAM

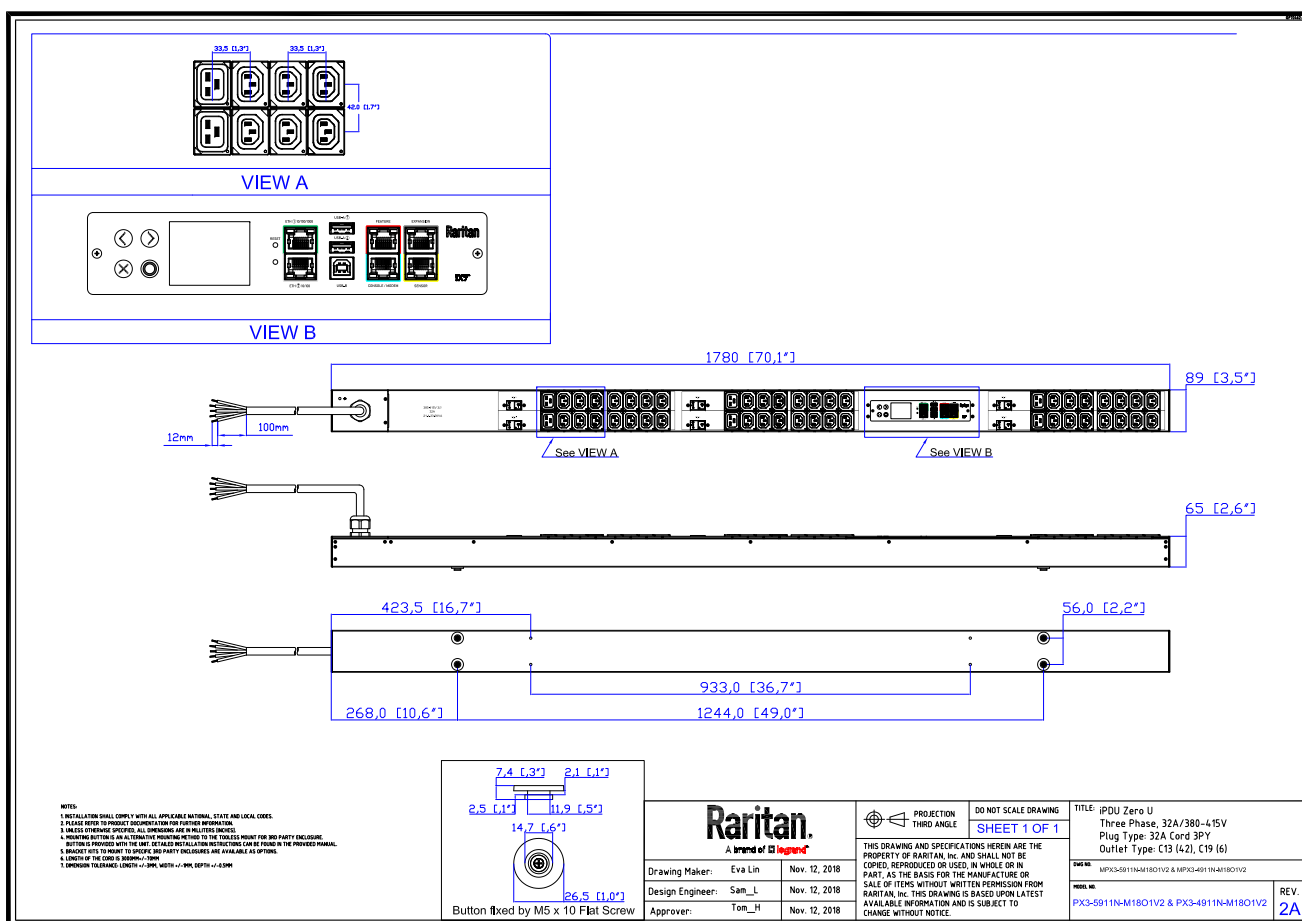


## Technical Specifications / Engineering Submittals

Raritan Model Number: PX3-5911N-M1801V2

rev20250625

### MECHANICAL DIAGRAM



## Technical Specifications / Engineering Submittals

Raritan Model Number: PX3-5911N-M1801V2

rev20250625

### TRIP CURVE

This file generated on: Wed, June 25, 2025 - 03:50:13