

## Technical Specifications / Engineering Submittals

Raritan Model Number: PXE-1473V

rev20170831

### LINE DRAWING



### FEATURES

|                                     |   |
|-------------------------------------|---|
| Energy Metering                     | Voltage (V), Current (A), Active Power (kW), Real Power (kVA), Energy (kWh), Power Factor |
| Metering Accuracy                   | ISO/IEC 62053-21 1%   |
| Metering per Input Line             | Yes   |
| Metering per Branch Circuit Breaker | No  |
| Metering per Output Receptacle      | No  |
| Remote Outlet Switching             | No  |
| Environmental Sensor Ready          | Yes   |
| Replaceable Controller              | No  |
| Compatible Sensors                  | Temperature, Humidity, Air Flow, Differential Pressure, Water Leak, and Contact Closure   |
| Networking                          | (10/100 BaseT) Ethernet port. Optional WiFi (802.11a/b/g/n)                               |
| Remote Management                   | HTTP(s); SSH; Telnet; RS-232 (Serial); Power IQ; SNMP version v2/v3; SMTP; JSON-RPC       |
| Cascading                           | No  |
| Onboard Display                     | 3-digit LED user-selectable display : Voltage, current, or active power (per line)        |
| Embedded Processor                  | ARM9 400MHZ (Atmel SAM9G20), 16MB SPI Flash, 64MB SDRAM                                   |

## Technical Specifications / Engineering Submittals

Raritan Model Number: PXE-1473V

rev20170831

### INPUT

|                       |                                |
|-----------------------|--------------------------------|
| Input Plug            | NEMA 5-15P (2P3W)              |
| Cord Length           | 3 meters (9.84 feet) standard  |
| Cord Entry            | Bottom-bottom feed             |
| Cable Type            | IP44("splashproof")            |
| Number of Power Cords | 1                              |
| Maximum Input Current | 15A                            |
| Nominal Input Voltage | 120V                           |
| Rated Input Voltage   | 100 - 120V                     |
| Input Frequency       | 50/60Hz                        |
| Power Capacity        | 1.2kVA at 100V, 1.4kVA at 120V |

### OUTPUT

|                                  |                      |
|----------------------------------|----------------------|
| Nominal Output Voltage           | 120V                 |
| Rated Output Voltage             | 100 - 120V           |
| Receptacles (Output Connections) | (24) NEMA 5-20R, 16A |
| Securelock Support               | No                   |
| Cord Retention                   | Yes                  |
| Overload Protection              | N/A                  |

### PHYSICAL

|                             |   |
|-----------------------------|---|
| Color                       | Black powder coat (custom colors available)     |
| Unit Dimensions (WxDxH)     | 2.1" x 1.7" x 51.1" ; 52mm x 43mm x 1298mm      |
| Unit Weight                 | 2.5 kg  |
| Shipping Weight             | 5 kg  |
| Shipping Dimensions (WxDxH) | 7.28" x 4.72" x 55.43" ; 185mm x 120mm x 1408mm |
| Mounting                    | RACK-KIT-PX2-1K-ZU                              |

## Technical Specifications / Engineering Submittals

Raritan Model Number: PXE-1473V

rev20170831

### ENVIRONMENTAL

---

|                             |           |
|-----------------------------|-----------|
| Operating Temperature       | 50°C      |
| Operating Relative Humidity | 85%       |
| Operating Elevation         | 0-10000ft |

---

### CONFORMANCE

---

|                      |  |
|----------------------|--|
| Regulatory Approvals | UL Listed, Canada ICES-003, Part 15 Class A of the FCC rules, RoHS compliant |
| Warranty             | Standard 2 years manufacturer warranty                                       |

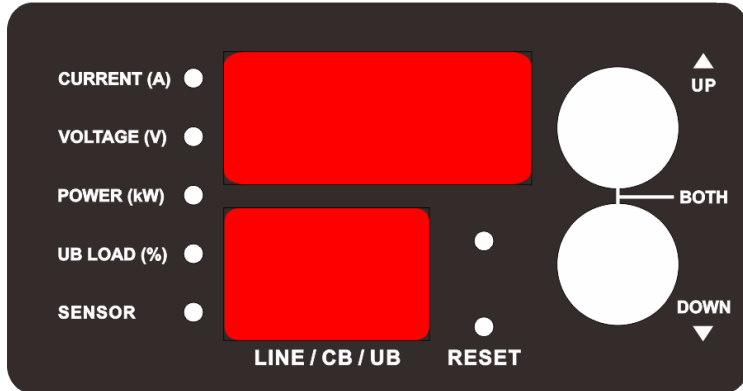
---

**Technical Specifications / Engineering Submittals**  
Raritan Model Number: PXE-1473V

rev20170831

**CONTROL PANEL**

**Dimension: 76mm x 40mm**

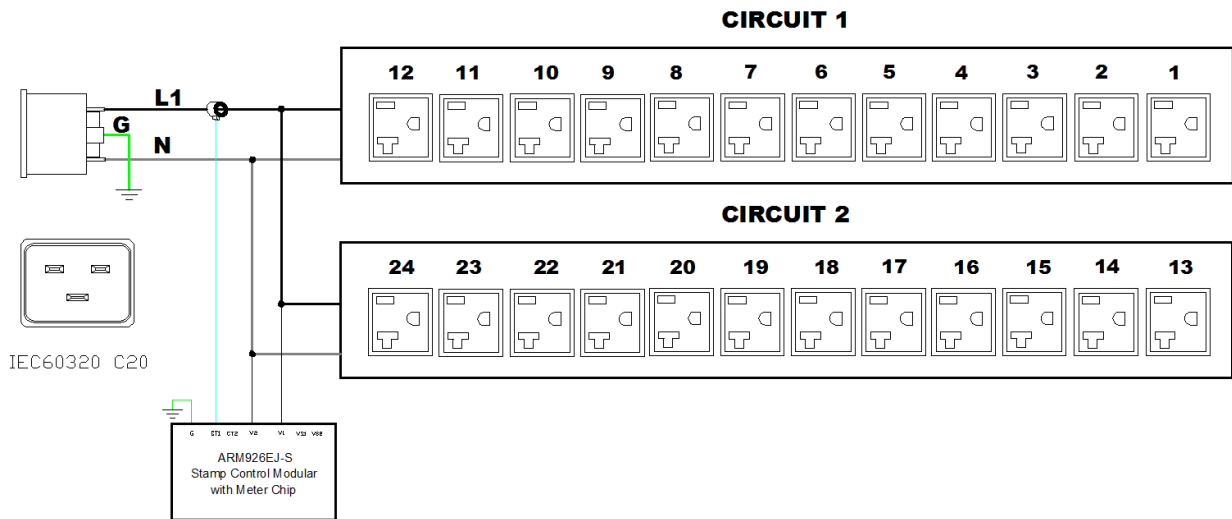


# Technical Specifications / Engineering Submittals

Raritan Model Number: PXE-1473V

rev20170831

## ELECTRICAL (ONE LINE) DIAGRAM

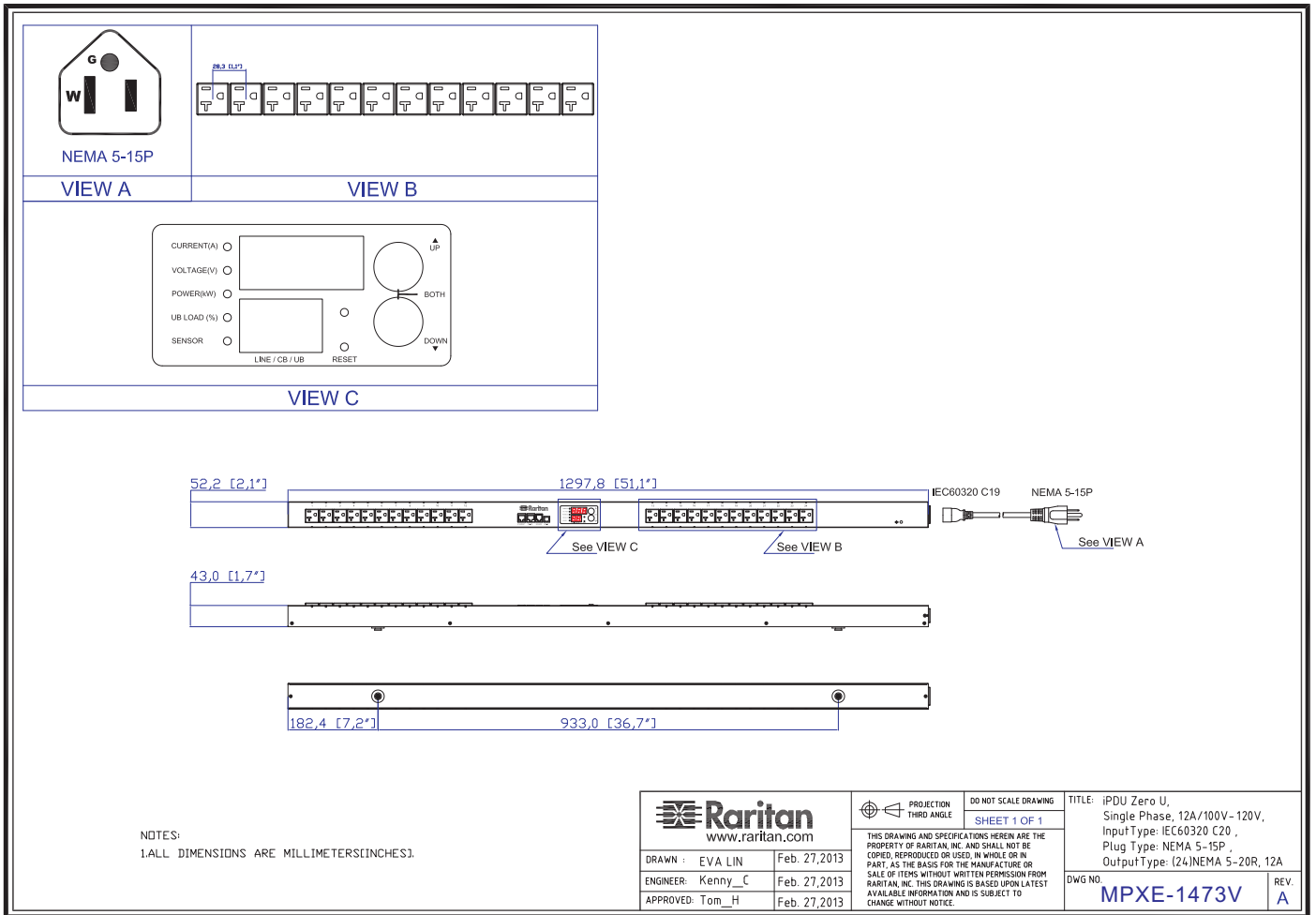


## Technical Specifications / Engineering Submittals

Raritan Model Number: PXE-1473V

rev20170831

### MECHANICAL DIAGRAM



## Technical Specifications / Engineering Submittals

Raritan Model Number: PXE-1473V

rev20170831

### TRIP CURVE

This file generated on: Thu, August 31, 2017 - 21:59:26